

Yangcong

Supported by GSI CHINA

LECTOR RFID - PC

Guía de Desarrollo .net

1. Visión general.....	-4-
1.1 Descripción general del contenido.....	- 4 -
1.2 Proceso de desarrollo.....	- 4 -
1.3 Modelos aplicables.....	- 5 -
1.4 Declaración de derechos de autor	- 5 -
2. Descripción de la función de los módulos API.....	- 5 -
2.1 Conectar y Desconectar	-6-
2.1.1 Crear conexión de puerto serie.....	- 6 -
2.1.2 Crear conexión TCP.....	- 6 -
2.1.3 Crear conexión 485.....	- 6 -
2.1.4 Crear conexión 485 (múltiples conexiones 485).....	- 7 -
2.1.5 Crear conexión USB.....	- 8 -
2.1.6 Comprobar el estado de la conexión.....	- 8 -
2.1.7 Conexión única cerrada.....	- 9 -
2.1.8 Cerrar todas las conexiones	- 9 -
2.1.9 Escucha del servidor TCP abierto.....	- 10 -
2.1.10 Cerrar la escucha del servidor TCP.....	- 11 -
2.1.11 Obtener el estado de escucha del servidor	- 11 -
2.1.12 Establecer el tipo de idioma de la API.....	- 12 -
2.1.13 Obtener el tipo de idioma de la API.....	- 12 -
2.1.14 Iniciar búsqueda de dispositivos.....	- 12 -
2.1.15 Detener dispositivos de búsqueda	- 13 -
2.1.16 Establecer el tiempo de espera de respuesta del comando	- 13 -
2.2 Configuración del dispositivo	- 13 -
2.2.1 Establecer parámetros de IP.....	- 13 -
2.2.2 Obtener parámetros de IP.....	- 14 -
2.2.3 Comando de parada	- 14 -
2.2.4 Establecer la hora del dispositivo	- 14 -
2.2.5 Obtener hora del dispositivo.....	- 15 -
2.2.6 Establecer parámetro de puerto serie.....	- 15 -
2.2.7 Obtener parámetro de puerto serie.....	- 16 -
2.2.8 Establecer dirección MAC.....	- 16 -
2.2.9 Obtener dirección MAC	- 17 -
2.2.10 Establecer dirección RS485.....	- 17 -
2.2.11 Obtener dirección RS485	- 18 -
2.2.12 Configurar conmutador DHCP.....	- 18 -
2.2.13 Obtener estado del conmutador DHCP.....	- 18 -
2.2.14 Establecer modo servidor/cliente.....	- 19 -
2.2.15 Obtener modo servidor/cliente.....	- 19 -
2.2.16 Obtener información del dispositivo.....	- 20 -
2.2.17 Obtener versión de banda base.....	- 20 -
2.2.18 Obtener la relación de onda estacionaria de la antena.....	- 20 -
2.2.19 Obtener formato de salida de datos de etiquetas	- 21 -
2.2.20 Establecer el formato de salida de datos de etiqueta	- 21 -
2.2.21 Reiniciar.....	- 22 -
2.2.22 Obtener la temperatura del lector.....	- 22 -
2.2.23 Establecer código personalizado.....	- 23 -
2.2.24 Obtener código personalizado.....	- 23 -
2.2.25 Establecer control de zumbador.....	- 23 -
2.2.26 Configurar el interruptor del zumbador	- 24 -
2.2.27 Obtener el número de serie del lector.....	- 24 -
2.3 Configuración RFID.....	- 25 -
2.3.1 Restablecimiento de fábrica	- 25 -
2.3.2 Establecer parámetros de banda base.....	- 25 -
2.3.3 Obtener parámetros de banda base.....	- 26 -
2.3.4 Configuración de la potencia de salida del puerto de la antena.....	- 26 -
2.3.5 Obtener la potencia de salida del puerto de la antena.....	- 27 -
2.3.6 Establecer parámetros de carga de datos de etiquetas	- 27 -

2.3.7	Parámetros de carga de Obtener datos de etiqueta	- 27 -
2.3.8	Obtener propiedad del dispositivo.....	- 28 -
2.3.9	Establecer frecuencia RFRango.....	-28 -
2.3.10	Obtener rango de frecuencia RF.....	- 29 -
2.3.11	Establecer puntos de frecuencia de trabajo de RF	- 29 -
2.3.12	Obtener puntos de frecuencia de trabajo de RF	- 30 -
2.3.13	Configurar el modo de suspensión automática del dispositivo	- 31 -
2.3.14	Obtener el modo de suspensión automática del dispositivo	- 31 -
2.3.15	Configurar la autocomprobación de la red del lector.....	- 31 -
2.3.16	Obtener el estado de autocomprobación de la red del lector.....	- 32 -
2.3.17	Activar antena	- 32 -
2.3.18	Obtener el estado de habilitación de la antena.....	- 33 -
2.3.19	Obtener temperatura RFID.....	- 33 -
2.3.20	Configuración de expansión de banda base.....	- 34 -
2.4	Operación GPIO.....	- 34 -
2.4.1	Establecer parámetros de activación de GPI	- 34 -
2.4.2	Obtener parámetros de activación de GPI.....	- 35 -
2.4.3	Obtener estado GPI	- 36 -
2.4.4	Establecer estado de nivel de GPO.....	- 37 -
2.4.5	Establecer parámetros Wiegand	- 37 -
2.4.6	Obtener parámetros Wiegand	- 37 -
2.5	Operación de la etiqueta 6C	- 38 -
2.5.1	Etiqueta de lectura	- 38 -
2.5.2	Etiqueta de escritura	- 41 -
2.5.3	Etiqueta de bloqueo	- 43 -
2.5.4	Kill Tag (destruir)	- 44 -
2.5.5	Obtener parámetros QT	- 45 -
2.5.6	Establecer parámetros QT.....	- 45 -
2.5.6	Operación no rastreable de G2V2	- 46 -
2.6	Operación de etiqueta 6B (omitida)	- 48 -
2.7	Interfaz de devolución de llamada IAsynchronousMessage.....	- 48 -
2.8	Introducciones al campo Tag_Model de datos de devolución de llamada.....	- 48 -
2.9	Datos de devolución de llamada GPI_Modelo Introducción al campo.....	- 49 -
2.10	Transferencia continua de puntos de interrupción	- 49 -
2.10.1	Establecer	- 49 -
2.10.2	Obtener.....	- 50 -
2.10.3	Recuperar datos de caché de punto de interrupción.....	- 50 -
2.10.4	Borrar datos de caché de puntos de interrupción.....	- 51 -
2.11	Operación Wi-Fi	- 51 -
2.11.1	Obtener el estado del interruptor de Wi-Fi	- 51 -
2.11.2	Establecer el estado del interruptor Wi-Fi	- 51 -
2.11.3	Obtener IP del adaptador Wi-Fi	- 52 -
2.11.4	Establecer la IP del adaptador Wi-Fi.....	- 52 -
2.11.5	Buscar punto de acceso Wi-Fi	- 53 -
2.11.6	Guardar resultado de búsqueda de Wi-Fi	- 53 -
2.11.7	Conectar el punto de acceso Wi-Fi	- 53 -
2.11.8	Obtener el nombre de Wi-Fi conectado actual.....	- 54 -
2.12	Función de lista blanca	- 54 -
2.12.1	Establecer parámetros de lista blanca.....	- 55 -
2.12.2	Obtener parámetros de la lista blanca.....	- 55 -
2.12.3	Cargar el archivo de la base de datos de la lista blanca al lector	- 56 -
2.13	Descripción del parámetro del número de antena	- 58 -
2.14	Interfaz de devolución de llamada ISearchDevice Instrucciones de campo	- 58 -
2.15	Instrucciones archivadas del modelo de dispositivo de datos de devolución de llamada	- 58 -
3.	Ejemplo de programación	- 58 -
4.	Preguntas frecuentes y soluciones	- 60 -
5.	Apéndice A: Código de error devuelto por la operación de etiqueta 6C	- 61 -

1. Resumen

1.1 Resumen del contenido

Para facilitar el desarrollo secundario de los usuarios, proporcionamos una biblioteca de funciones que puede ejecutarse en la plataforma .net. La biblioteca de funciones está escrita en lenguaje C# y empaquetada en una biblioteca de enlace dinámico estándar, y el entorno de desarrollo es .Net Framework 2.0.

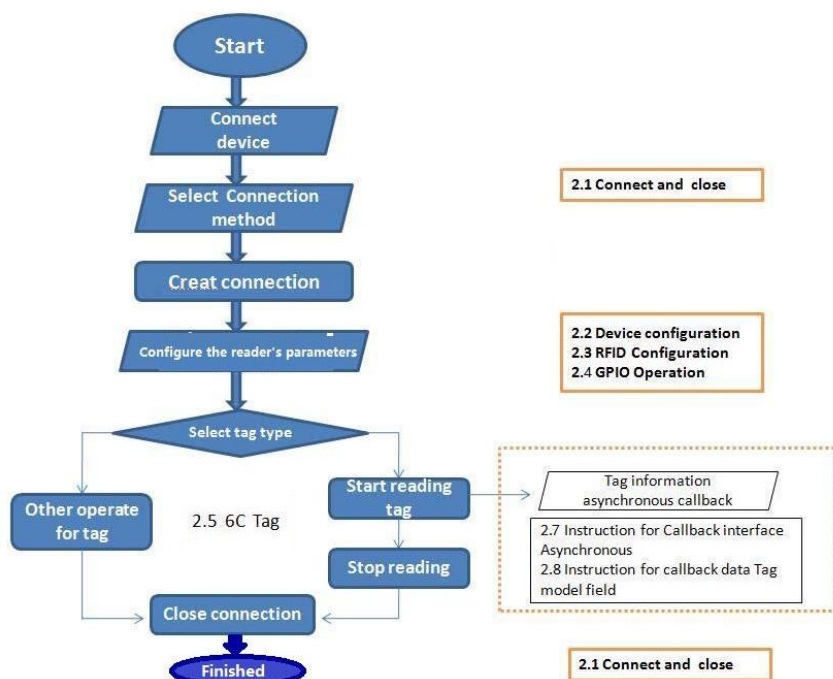
Esta guía presenta los indicadores técnicos correspondientes, las notas y precauciones de desarrollo de la aplicación, la descripción de la función de la interfaz de la aplicación, etc.

Declaración:

1. Para el funcionamiento del software de gestión de RFID (DEMO), consulte el manual de usuario del software de demostración y el manual de usuario del producto relacionado.

2. Si este documento aún no puede satisfacer sus necesidades de desarrollo, por favor, póngase en contacto con nosotros para obtener ayuda.

1.2 Proceso de desarrollo



1.3 Modelos Aplicables

Este documento enumera la API de todos los dispositivos RFID, la siguiente tabla enumera la función compatible de diferentes modelos (consulte las notas específicas de los detalles del módulo de función)

Function module	Applicable models
Connection operation	All products
Device configuration	All products
RFID configuration	All products
GPO operation	All products
6C tag operation	All products
6B tag operation	All products

1.4 Declaración de derechos de autor

Todo el contenido de este documento, incluido el texto y las imágenes, es original. La empresa se reserva el derecho de perseguir responsabilidades legales para quienes lo utilicen con fines comerciales sin permiso.

Sin autorización, los usuarios no pueden agregar, modificar o eliminar el contenido de este documento, ni difundirlo a través de Internet o CD-ROM. Si lo viola, será responsable de las consecuencias.

2. Módulos API Descripción de la función

**Instance code
variable
declaration**

```
List<Tag_Model> dataList = new List<Tag_Model>();
static RFIDReaderAPI.Param_Option PARAM_SET = new RFIDReaderAPI.Param_Option();
static RFIDReaderAPI.RFID_Option RFID_OPTION = new RFIDReaderAPI.RFID_Option();
static string tid = "E280110C20007719E0B20973";
static string epc = "ADB5F1DC518721D7710158EF";
static string ConnID = "192.168.1.116:9090";
string usbConnID =
@"\\?\hid#vid_2121&pid_8633#6&297867e4&0&0000#{4d1e55b2-f16f-11cf-88cb-00111
1000030}";
static string SerialConnId = "COM3:115200";
```

2.1 Conectar Y Desconectar

2.1.1 Crear una conexión de puerto serie

Namespace	RFIDReaderAPI.RFIDReader
Function	static bool CreateSerialConn(string serialParam, IAsynchronousMessage log)
Parameter	serialParam: serial port connection Parameter, eg: "COM1:115200" log: Data callback interface, all tags data will be called back from this interface.
Return	True: successful; false: failed
Remark	1. Connection created by this method, "serialParam" will be this connection channel's ID, which is different with other connection channel. 2. log: Data callback interface , please refer to 2.7callback interface introductions for more information.
Example code	<pre> RFIDReaderAPI.Interface.IAsynchronousMessage log = new Program(); if (RFIDReaderAPI.RFIDReader.CreateSerialConn(SerialConnId, log)) { Console.WriteLine("Create connection successfully!"); } else { Console.WriteLine("Create connection failed!"); } </pre>

2.1.2 Crear conexión TCP

Namespace	RFIDReaderAPI.RFIDReader
Function	static bool CreatTcpConn(string tcpParam, IAsynchronousMessage log)
Parameter	tcpParam: TCP connection Parameter, eg: "192.168.1.116:9090" log: Data callback interface, all tags data will be called back from this interface.
Return	True: successful; false: failed
Remark	1. Connection created by this method, "tcpParam" will be this connection channel's ID, which is different with other connection channel. 2. log: Data callback interface , Please refer to 2.7callback interface introductions for more information
Example code	<pre> RFIDReaderAPI.Interface.IAsynchronousMessage log = new Program(); if (RFIDReaderAPI.RFIDReader.CreatTcpConn("192.168.1.116:9090", log)) // TCP Connect { Console.WriteLine("Create connection successfully!"); } else { Console.WriteLine("Create connection failed!"); } </pre>

2.1.3 Crear conexion 485

Namespace	RFIDReaderAPI.RFIDReader
Function	static bool Create485Conn(string _485Param, IAsynchronousMessage log)
Parameter	_485Param: RS485 connection Parameter, eg:"1:COM1:115200", "1" as 485 connection address. log: Data callback interface, all tags data will be called back from this interface.
Return	True: successful; false: failed
Remark	1. Connection created by this method, " 485Param " will be this connection channel's ID which is different with other connection channel. 2. log: Data callback interface , Please refer to 2.7callback interface introductions for more information.
Example code	<pre>RFIDReaderAPI Interface IAsynchronousMessage log = new Program(); if (RFIDReaderAPI.RFIDReader.Create485Conn("1:COM1:115200", log)) { Console.WriteLine("Create connection successfully!"); } else { Console.WriteLine("Create connection failed!"); }</pre>

2.1.4 Crear conexion 458 (multiplas conexion 458)

Namespace	RFIDReaderAPI.RFIDReader
Function	static bool Create485sConn(string _485Param, IAsynchronousMessage log)
Parameter	_485Param: RS485 connection Parameter, eg:"1:COM1:115200", "1" as 485 connection address. log: Data callback interface, all tags data will be called back from this interface.
Return	True: successful; false: failed
Remark	1. Connection created by this method, " 485Param " will be this connection channel's ID which is different with other connection channel. 2. log: Data callback interface , Please refer to 2.7callback interface introductions for more information. 3. This function supports one com port to create multiple 485 connections. eg: 1:COM1:115200 2:COM1:115200 Note: For this funtion, if the current connection is reading tags, we need to stop reading first, then can switch to other 485 connection.
Example code	<pre>RFIDReaderAPI Interface IAsynchronousMessage log = new Program(); if (RFIDReaderAPI.RFIDReader.Create485sConn("1:COM1:115200", log)) { Console.WriteLine("485 address 1 connection created successfully!"); } else { Console.WriteLine("485 address 1 connection created failed!"); } if (RFIDReaderAPI.RFIDReader.Create485sConn("2:COM1:115200", log)) {</pre>

```

        Console.WriteLine("485 address 2 connection created successfully!");
    }
    else
    {
        Console.WriteLine("485 address 2 connection created failed!");
    }
}

```

2.1.5 Crear conexión conexión

Namespace	RFIDReaderAPI.RFIDReader
Function	static bool CreateUsbConn(string usbParam, IntPtr Handle, IAsynchronousMessage log)
Parameter	usbParam: USB connect parameter Handle: window handle or service handle log: Data callback interface, all the tag data will be callback from the interface object
Return	True: successful; false: failed
Remark	<ol style="list-style-type: none"> parameter "usbParam", through same namespace static List<string> GetUsbHidDeviceList() to get connection parameter of USB device list log data callback interface, refer to 2.7callback interface introductions for detailed information. Default name is "UHF READER" after USB connected
Example code	<pre> RFIDReaderAPI Interface IAsynchronousMessage log = new Program(); //Gets the console handle IntPtr Handle = User32API.GetCurrentWindowHandle(); List<String> driverlist = RFIDReader.GetUsbHidDeviceList(); ConnID = driverlist[0]; if (RFIDReader.CreateUsbConn(ConnID , Handle, log)) { Console.WriteLine("Create connection successfully! "); } else { Console.WriteLine("Create connection failed!"); } </pre>

2.1.6 Comprobar estado de conexión

Namespace	RFIDReaderAPI.RFIDReader
Function	static bool CheckConnect(string connectID)
Parameter	connectID: connection ID, eg:"192.168.1.116:9090"
Return	True: successful; false: failed
Remark	"connectID" is the connection parameter when creates connection
Example code	<pre> RFIDReaderAPI.Interface.IAsynchronousMessage log = new Program(); if (RFIDReaderAPI.RFIDReader.CreateTCPConn("192.168.1.116:9090", log)) </pre>

```

{
    Console.WriteLine("Create connection successfully!");
    if (RFIDReader.CheckConnect("192.168.1.116:9090"))
    {
        Console.WriteLine("The current connection is normal.");
    }
    else
    {
        Console.WriteLine("The current connection is abnormal.");
    }
}
else
{
    Console.WriteLine("Create connection failed!");
}

```

2.1.7 Cerrar la conexión simple

Namespace	RFIDReaderAPI.RFIDReader
Function	static void CloseConn(string connectID)
Parameter	connectID: connection ID, eg:"192.168.1.116:9090"
Return	None
Remark	"connectID" is the connection parameter when creates connection
Example code	<pre> RFIDReaderAPI.Interface.IAsynchronousMessage log = new Program(); if (RFIDReaderAPI.RFIDReader.CreateTcpConn("192.168.1.116:9090", log)) { Console.WriteLine("Create connection successfully!"); RFIDReader.CloseConn("192.168.1.116:9090"); if (RFIDReader.CheckConnect("192.168.1.116:9090")) { Console.WriteLine("The current connection is normal."); } else { Console.WriteLine("The current connection is abnormal."); } } else { Console.WriteLine("Create connection failed!"); } </pre>

2.1.8 Cerrar todas las conexiones

Namespace	RFIDReaderAPI.RFIDReader
Function	static void CloseAllConnect()
Parameter	None
Return	None
Remark	This method will close all created connections.
Example code	<pre> RFIDReaderAPI.Interface.IAsynchronousMessage log = new Program(); if (RFIDReaderAPI.RFIDReader.CreateTcpConn("192.168.1.116:9090", log)) { Console.WriteLine("Create connection successfully!"); RFIDReader.CloseAllConnect(); Console.WriteLine("Close all connections"); if (RFIDReader.CheckConnect("192.168.1.116:9090")) { Console.WriteLine("The current connection is normal."); } else { Console.WriteLine("The current connection is abnormal."); } } else { Console.WriteLine("Create connection failed!"); } </pre>

2.1.9 Escucha del servidor TCP abierto

Namespace	RFIDReaderAPI.RFIDReader
Function	static Boolean OpenTcpServer(string serverIP,string serverPort,IAsynchronousMessage log)
Parameter	serverIP: the IP been listening. serverPort: the port been listening Log: all data callback interface after connected , details refer to: 2.7callback interface introductions
Return	Listen successful or not
Remark	<ol style="list-style-type: none"> 1. Open server listening 2. When device in client mode, will connect related listening port automatically eg.: testing IP and port under client mode of reader as"IP:192.168.1.75 Port:9090" Code example: OpenTcpServer("192.168.1.75", "9090",log); 3. The default connecting IP (client mode) is "192.168.1.1", port is "9090"
Example code	<pre> RFIDReaderAPI Interface IAsynchronousMessage log = new Program(); if (RFIDReader.OpenTcpServer("192.168.1.116", "9090", log)) { </pre>

```

        Console.WriteLine("Start TCP server listening successfully!");
    }

```

2.1.10 Cerrar el servidor TCP

Namespace	RFIDReaderAPI.RFIDReader
Function	static void CloseTcpServer()
Parameter	None
Return	None
Remark	Close TCP server listening
Example code	<pre> RFIDReaderAPI Interface IAsynchronousMessage log = new Program(); if (RFIDReader.OpenTcpServer("192.168.1.110", "9090", log)) { Console.WriteLine("Start TCP server listening successfully!"); RFIDReader.CloseTcpServer(); Console.WriteLine("TCP server listening closed."); if (RFIDReader.GetServerStartUp()) { Console.WriteLine("listening started"); } else { Console.WriteLine("listening closed"); } } </pre>

2.1.11 Obtener estado de escucha del servidor

Namespace	RFIDReaderAPI.RFIDReader
Function	static bool GetServerStartUp()
Parameter	None
Return	Server listening or not
Remark	True: listening, false: not in listening
Example code	<pre> RFIDReaderAPI Interface IAsynchronousMessage log = new Program(); if (RFIDReader.OpenTcpServer("192.168.1.110", "9090", log)) { Console.WriteLine("Start TCP server listening successfully!"); if (RFIDReader.GetServerStartUp()) { Console.WriteLine("listening started"); } else { </pre>

```

        Console.WriteLine("listening closed");
    }
}

```

2.1.12 Establecer el tipo de idioma de la API

Namespace	RFIDReaderAPI.RFIDReader
Function	static void SetAPILanguageType(int type)
Parameter	Type: eAPILanguage.Chinese is Chinese, eAPILanguage.English is English
Return	None
Remark	Change the API information prompt language type, non-persistent, default is English
Example code	<pre> RFIDReaderAPI.Interface.IAsynchronousMessage log = new Program(); if (RFIDReaderAPI.RFIDReader.CreateTcpConn("192.168.1.116:9090", log)) { RFIDReader.SetAPILanguageType(eAPILanguage.Chinese); Console.WriteLine("Set the API prompt to Chinese "); string language = RFIDReader.GetAPILanguageType(); Console.WriteLine("Current language is:"+language); } else { Console.WriteLine("Create connection failed!"); } </pre>

2.1.13 Obtener el tipo de idioma de la API

Namespace	RFIDReaderAPI.RFIDReader
Function	static Int GetAPILanguageType()
Parameter	None
Return	"0" is English, "1" is Chinese
Remark	The default language is English
Example code	<pre> RFIDReaderAPI.Interface.IAsynchronousMessage log = new Program(); if (RFIDReaderAPI.RFIDReader.CreateTcpConn("192.168.1.116:9090", log)) { RFIDReader.SetAPILanguageType(eAPILanguage.Chinese); Console.WriteLine("Set the API prompt to Chinese "); string language = RFIDReader.GetAPILanguageType(); Console.WriteLine("Current language is:"+language); } else { Console.WriteLine("Create connection failed!"); } </pre>

2.1.14 Iniciar búsqueda de dispositivos

Namespace	RFIDReaderAPI.RFIDReader
Function	static bool StartSearchDevice (ISearchDevice msg)
Parameter	msg: Device data information callback interface For details of the interface, please refer to 2.14 IsearchDevice interface description Only applicable to devices with TCP connection
Return	Ture or false
Remark	None
Example code	<pre>// this: Has implemented the interface ISearchDevice if (!RFIDReaderAPI.RFIDReader.StartSearchDevice(this)) { ShowMessage("Start Search Failure!"); }</pre>

2.1.15 Parar búsqueda de dispositivos

Namespace	RFIDReaderAPI.RFIDReader
Function	static Int StopSearchDevice ()
Parameter	None
Return	None
Remark	Turn off search
Example code	<pre>RFIDReaderAPI RFIDReader StopSearchDevice();</pre>

2.1.16 Establecer el tiempo de espera de respuesta del comando

Namespace	RFIDReaderAPI.RFIDReader
Function	static string SetTimeOut (int time)
Parameter	Time: Timeout duration, unit ms
Return	Result 0 OK
Remark	Set API response timeout, default timeout is 2000ms
Example code	<pre>RFIDReader SetTimeOut(1000);</pre>

2.2 Configuración del dispositivo

2.2.1 Establecer parámetros IP

Namespace	RFIDReaderAPI.RFIDReader._ReaderConfig
Function	static Int32 Set ReaderNetworkPortParam(String ConnID, String iP, String mask, String gateway)
Parameter	// ConnID: connection identifier // iP: IP address, e.g.: "192.168.1.116"

	// mask: Subnet Mask, e.g.: "255.255.255.0" // gateway: gateway, e.g.: "192.168.1.1"
Return	0: successful; others: failed
Remark	1. This method will close all created connection.
Example code	<pre>string tcp = "192.168.1.116:9090"; RFIDReaderAPI.Interface.IAsynchronousMessage log = new Program(); if (RFIDReaderAPI.RFIDReader.CreateTcpConn(tcp, log)) { int rt = RFIDReader._ReaderConfig.SetReaderNetworkPortParam (tcp, "192.168.1.115", "255.255.255.0", "192.168.1.1"); if (rt == 0) Console.WriteLine("SET OK"); else Console.WriteLine("SET FAILED"); } else { Console.WriteLine("Create connection failed!"); }</pre>

2.2.2 Obtener parámetros IP

Namespace	RFIDReaderAPI.RFIDReader._ReaderConfig
Function	static String GetReaderNetworkPortParam(String ConnID)
Parameter	// ConnID: connection identifier
Return	IP add Subnet mask Gateway , e.g. : "192.168.1.116 255.255.255.0 192.168.1.1"
Remark	
Example code	<pre>string tcp = "192.168.1.116:9090" RFIDReaderAPI.Interface.IAsynchronousMessage log = new Program(); if (RFIDReaderAPI.RFIDReader.CreateTcpConn(tcp, log)) { string nowParam = RFIDReader._ReaderConfig.GetReaderNetworkPortParam(tcp); Console.WriteLine(nowParam); } else { Console.WriteLine("Create connection failed!"); }</pre>

2.2.3 Parar comando

Namespace	RFIDReaderAPI.RFIDReader._ReaderConfig
Function	static Int32 Stop(String ConnID)
Parameter	// ConnID: connection identifier
Return	0: successful; others: failed
Remark	1. This method will make reader stop current workings. 2. Stop inventory reading using this method
Example code	RFIDReader._RFIDConfig Stop("192.168.1.116:9090");

2.2.4 Establecer hora del dispositivo

Namespace	RFIDReaderAPI.RFIDReader._ReaderConfig
Function	static Int32 SetReaderUTC(String ConnID, String param)
Parameter	// ConnID: connection identifier // param: time parameter"yyyy.MM.dd HH:mm:ss", e.g.:"1970.01.01 00:00:00"
Return	0: successful; others: failed
Remark	None
Example code	<pre>string tcp = "192.168.1.116:9090" RFIDReaderAPI.Interface.IAsynchronousMessage log = new Program(); if (RFIDReaderAPI.RFIDReader.CreateTcpConn(tcp, log)) { int rt = RFIDReader._ReaderConfig.SetReaderUTC(tcp,"2019.11.15 15:15:02"); if (rt == 0) Console.WriteLine("SET OK"); } else { Console.WriteLine("Create connection failed!"); }</pre>

2.2.5 Obtener hora del dispositivo

Namespace	RFIDReaderAPI.RFIDReader._ReaderConfig
Function	static String GetReaderUTC(String ConnID)
Parameter	// ConnID: connection identifier
Return	Time Parameter"yyyy.MM.dd HH:mm:ss", e.g.:"1970.01.01 00:00:00"
Remark	None
Example code	<pre>string tcp = "192.168.1.116:9090" RFIDReaderAPI.Interface.IAsynchronousMessage log = new Program(); if (RFIDReaderAPI.RFIDReader.CreateTcpConn(tcp, log)) { string time = RFIDReader._ReaderConfig.GetReaderUTC(tcp); Console.WriteLine(time); } else { Console.WriteLine("Create connection failed!"); }</pre>

2.2.6 Establecer parámetro de puerto serie

Namespace	RFIDReaderAPI.RFIDReader._ReaderConfig
Function	static Int32 SetReaderSerialPortParam(String ConnID, eBaudrate baudRate)

Parameter	// ConnID: connection identifier // baudRate: eBaudrate._9600bps, eBaudrate._19200bps, eBaudrate._115200bps, eBaudrate._230400bps, eBaudrate._460800bps.
Return	0: successful; others: failed
Remark	None
Example code	<pre>string tcp = "192.168.1.116:9090" RFIDReaderAPI.Interface.IAsynchronousMessage log = new Program(); if (RFIDReaderAPI.RFIDReader.CreateTcpConn(tcp, log)) { int rt = RFIDReader._ReaderConfig.SetReaderSerialPortParam(tcp,eBaudrate._115200bps); if (rt == 0) Console.WriteLine("SET OK"); } else { Console.WriteLine("Create connection failed!"); }</pre>

2.2.7 Establecer parámetro de puerto serie

Namespace	RFIDReaderAPI.RFIDReader._ReaderConfig
Function	static eBaudrate GetReaderSerialPortParam(String ConnID)
Parameter	// ConnID: connection identifier
Return	eBaudrate._9600bps, eBaudrate._19200bps, eBaudrate._115200bps, eBaudrate._230400bps, eBaudrate._460800bps.
Remark	None
Example code	<pre>string tcp = "192.168.1.116:9090" RFIDReaderAPI.Interface.IAsynchronousMessage log = new Program(); if (RFIDReaderAPI.RFIDReader.CreateTcpConn(tcp, log)) { eBaudrate rt = RFIDReader._ReaderConfig.GetReaderSerialPortParam(tcp); Console.WriteLine(rt.ToString()); } else { Console.WriteLine("Create connection failed!"); }</pre>

2.2.8 Establecer dirección MAC

Namespace	RFIDReaderAPI.RFIDReader._ReaderConfig
Function	static Int32 SetReaderMacParam(String ConnID, String param)
Parameter	// ConnID: connection identifier // param: MAC address format"00-00-00-00-00-00"
Return	0: successful; others: failed
Remark	None
Example code	<pre>string tcp = "192.168.1.116:9090" RFIDReaderAPI.Interface.IAsynchronousMessage log = new Program(); if (RFIDReaderAPI.RFIDReader.CreateTcpConn(tcp, log)) { int rt = RFIDReader._ReaderConfig.SetReaderMacParam(tcp,"6E-7A-1C-AA-FF-0B"); if (rt == 0) Console.WriteLine("SET OK"); else Console.WriteLine("SET FAILED"); }</pre>

2.2.9 Obtener dirección MAC

Namespace	RFIDReaderAPI.RFIDReader._ReaderConfig
Function	static String GetReaderMacParam(String ConnID)
Parameter	// ConnID: connection identifier
Return	MAC address
Remark	MAC address format"00-00-00-00-00-00"
Example code	<pre>string tcp = "192.168.1.116:9090" RFIDReaderAPI.Interface.IAsynchronousMessage log = new Program(); if (RFIDReaderAPI.RFIDReader.CreateTcpConn(tcp, log)) { string rt = RFIDReader._ReaderConfig.GetReaderMacParam(tcp); Console.WriteLine(rt); } else { Console.WriteLine("Create connection failed!"); }</pre>

2.2.10 Establecere direcciónc RS485

Namespace	RFIDReaderAPI.RFIDReader._ReaderConfig
Function	static Int32 SetReader485(String ConnID, String param)
Parameter	// ConnID: connection identifier // param: 0~255
Return	0: successful; others: failed

Remark	None
Example code	<pre>string tcp = "192.168.1.116:9090" RFIDReaderAPI.Interface.IAsynchronousMessage log = new Program(); if (RFIDReaderAPI.RFIDReader.CreateTcpConn(tcp, log)) { int rt = RFIDReader._ReaderConfig.SetReader485(tcp, "2"); if (rt == 0) Console.WriteLine("SET OK"); else Console.WriteLine("SET FAILED"); }</pre>

2.2.11 Obtener dirección RS485

Namespace	RFIDReaderAPI.RFIDReader._ReaderConfig
Function	static String GetReader485(String ConnID)
Parameter	// ConnID: connection identifier
Return	RS485 address
Remark	None
Example code	<pre>string tcp = "192.168.1.116:9090" RFIDReaderAPI.Interface.IAsynchronousMessage log = new Program(); if (RFIDReaderAPI.RFIDReader.CreateTcpConn(tcp, log)) { var rt = RFIDReader._ReaderConfig.GetReader485(tcp); Console.WriteLine(rt); }</pre>

2.2.12 Configurar conmutador DHCP

Namespace	RFIDReaderAPI.RFIDReader._ReaderConfig
Function	static String SetDHCP(String ConnID, Boolean param)
Parameter	// ConnID: connection identifier // param: true:open, false:close
Return	0: successful; others: failed
Remark	None
Example code	<pre>string tcp = "192.168.1.116:9090" RFIDReaderAPI.Interface.IAsynchronousMessage log = new Program(); if (RFIDReaderAPI.RFIDReader.CreateTcpConn(tcp, log)) { int rt = RFIDReader._ReaderConfig.SetDHCP(tcp, true); if (rt == 0) Console.WriteLine("SET OK "); else Console.WriteLine("SET FAILED "); }</pre>

2.2.13 Obtener estado de conmutador DHCP

Namespace	RFIDReaderAPI.RFIDReader._ReaderConfig
Function	static Boolean GetDHCP(String ConnID)
Parameter	// ConnID: connection identifier
Return	False:close, true:open
Remark	None
Example code	<pre>string tcp = "192.168.1.116:9090" RFIDReaderAPI.Interface.IAsynchronousMessage log = new Program(); if (RFIDReaderAPI.RFIDReader.CreateTcpConn(tcp, log)) { var rt = RFIDReader._ReaderConfig.GetDHCP(tcp); Console.WriteLine(rt); }</pre>

2.2.14 Establecer modo Servidor/cliente

Namespace	RFIDReaderAPI.RFIDReader._ReaderConfig
Function	static Int32 SetReaderServerOrClient(String ConnID, eWorkMode workMode,String ip,String port)
Parameter	// ConnID: connection identifier // workMode: eWorkMode.Server, eWorkMode.Client ip: such as"192.168.1.75" port: such as "9090"
Return	0: successful; others: failed
Remark	When reader at the server mode, Parameter ip is invalid, can input any character string
Example code	<pre>string tcp = "192.168.1.116:9090" RFIDReaderAPI.Interface.IAsynchronousMessage log = new Program(); if (RFIDReaderAPI.RFIDReader.CreateTcpConn(tcp, log)) { int rt = RFIDReader._ReaderConfig.SetReaderServerOrClient(tcp,eWorkMode.Server,"", "9090"); if (rt == 0) Console.WriteLine("SET OK "); else Console.WriteLine("SET FAILED "); }</pre>

2.2.15 Obtener modoServidor/cliente

Namespace	RFIDReaderAPI.RFIDReader._ReaderConfig
Function	static String GetReaderServerOrClient(String ConnID)
Parameter	// ConnID: connection identifier
Return	Server "server port" or Client "client port IP" "client port"
Remark	None

Example code	<pre>string tcp = "192.168.1.116:9090"; RFIDReaderAPI.Interface.IAsynchronousMessage log = new Program(); if (RFIDReaderAPI.RFIDReader.CreateTcpConn(tcp, log)) { int rt = RFIDReader._ReaderConfig.GetReaderServerOrClient(tcp); Console.WriteLine(rt); }</pre>
---------------------	--

2.2.16 Obtener información de dispositivo

Namespace	RFIDReaderAPI.RFIDReader._ReaderConfig
Function	static String GetReaderInformation(String ConnID)
Parameter	// ConnID: connection identifier
Return	Application version reader name reader power on time
Remark	Reader power on time unit is "second"
Example code	<pre>string tcp = "192.168.1.116:9090" RFIDReaderAPI.Interface.IAsynchronousMessage log = new Program(); if (RFIDReaderAPI.RFIDReader.CreateTcpConn(tcp, log)) { var rt = RFIDReader._ReaderConfig.GetReaderInformation(tcp); Console.WriteLine(rt); }</pre>

2.2.17 Obtener version de banda base

Namespace	RFIDReaderAPI.RFIDReader._ReaderConfig
Function	static String GetReaderBaseBandSoftVersion(String ConnID)
Parameter	// ConnID: connection identifier
Return	Baseband version
Remark	None
Example code	<pre>string tcp = "192.168.1.116:9090" RFIDReaderAPI.Interface.IAsynchronousMessage log = new Program(); if (RFIDReaderAPI.RFIDReader.CreateTcpConn(tcp, log)) { var rt = RFIDReader._ReaderConfig.GetReaderBaseBandSoftVersion(tcp); Console.WriteLine(rt); }</pre>

2.2.18 Obtener la relación de onda estacionaria de la antena

Namespace	RFIDReaderAPI.RFIDReader._RFIDConfig
Function	static String GetAntennaStandingWaveRatio(String ConnID, eAntennaNo antNo)
Parameter	// ConnID: connection identification, antNo: Antenna number enumeration

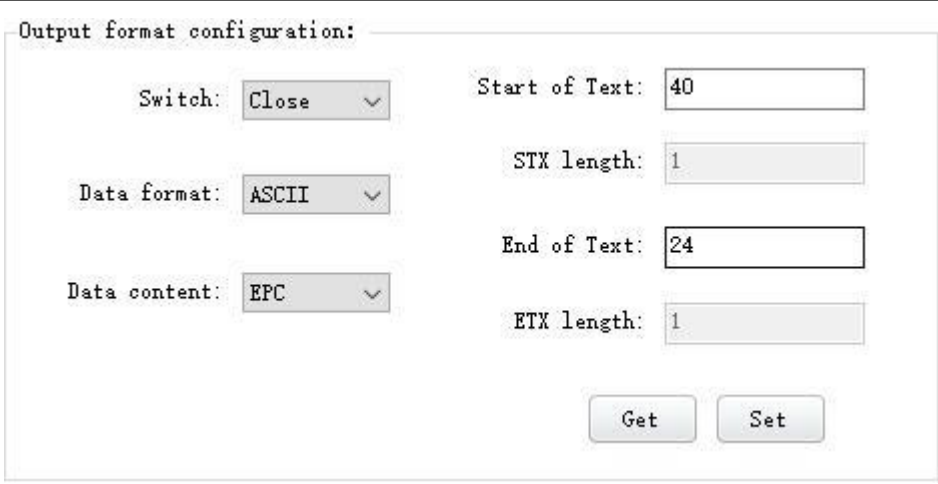
Return	Forward power detection backward power detection
Remark	If the difference is greater than 25, the antenna is connected, otherwise, the antenna is not connected
Example code	<pre>string tcp = "192.168.1.116:9090" RFIDReaderAPI.Interface.IAsynchronousMessage log = new Program(); if (RFIDReaderAPI.RFIDReader.CreateTcpConn(tcp, log)) { var rt = RFIDReader._RFIDConfig.GetAntennaStandingWaveRatio(tcp,1); Console.WriteLine(rt); }</pre>

2.2.19 Obtener formato de salida de datos de etiquetas

Namespace	RFIDReaderAPI.RFIDReader._ReaderConfig
Function	static String GetDataOutPutFormat (String ConnID)
Parameter	// ConnID: Connection identifier
Return	Switch Data format Data content STX ETX
Remark	None
Example code	<pre>string tcp = "192.168.1.116:9090" RFIDReaderAPI.Interface.IAsynchronousMessage log = new Program(); if (RFIDReaderAPI.RFIDReader.CreateTcpConn(tcp, log)) { var rt = RFIDReader._ReaderConfig.GetDataOutPutFormat(tcp); // Switch Data format Data content STX ETX Console.WriteLine(rt); }</pre>

2.2.20 Establecer formato de salida de datos de etiquetas

Namespace	RFIDReaderAPI.RFIDReader._ReaderConfig
Function	static String SetDataOutPutFormat (string connID,string switch,string outPutFormat,string outDataType,string startData,string endData)
Parameter	// ConnID: Connection identifier // switch: 0-close, 1-open, 2-UDP output // outPutFormat: 0-hex,1-ASCII //outDataType: 0-EPC,1-TID //startData: Start of Text //endData: End of Text
Return	0: successful; others: failed

Remark	
Example code	<pre>string tcp = "192.168.1.116:9090" RFIDReaderAPI.Interface.IAsynchronousMessage log = new Program(); if (RFIDReaderAPI.RFIDReader.CreateTcpConn(tcp, log)) { string rt = RFIDReader._ReaderConfig.SetDataOutPutFormat(tcp,"1","1","0","E200","7206"); // Switch Data format Data content STX ETX Console.WriteLine(rt); }</pre>

2.2.21 Reiniciar

Namespace	RFIDReaderAPI.RFIDReader._ReaderConfig
Function	static String ReSetReader(String ConnID)
Parameter	// ConnID: Connection identifier
Return	None
Remark	None
Example code	<pre>string tcp = "192.168.1.116:9090" RFIDReaderAPI.Interface.IAsynchronousMessage log = new Program(); if (RFIDReaderAPI.RFIDReader.CreateTcpConn(tcp, log)) { RFIDReader._ReaderConfig.ReSetReader(tcp); Console.WriteLine("Restarting"); }</pre>

2.2.22 Obtener temperatura del lector

Namespace	RFIDReaderAPI.RFIDReader._ReaderConfig
Function	static String GetReaderTemperature (String ConnID)
Parameter	// ConnID: Connection identifier
Return	Reader temperature

Remark	None
Example code	<pre>string tcp = "192.168.1.116:9090" RFIDReaderAPI.Interface.IAsynchronousMessage log = new Program(); if (RFIDReaderAPI.RFIDReader.CreateTcpConn(tcp, log)) { string rt = RFIDReader._ReaderConfig.GetReaderTemperature (tcp); Console.WriteLine("当前读写器温度: " + rt); }</pre>

2.2.23 Establecer codigo personalizado

Namespace	RFIDReaderAPI.RFIDReader._ReaderConfig
Function	static eAntennaNo SetCustomCode (String ConnID:)
Parameter	// ConnID: Connection identifier // param: The string to be set
Return	Result
Remark	None
Example code	<pre>string tcp = "192.168.1.116:9090" string param = "write Code"; RFIDReaderAPI.Interface.IAsynchronousMessage log = new Program(); if (RFIDReaderAPI.RFIDReader.CreateTcpConn(tcp, log)) { var rt = RFIDReader._ReaderConfig.SetCustomCode(tcp,param); Console.WriteLine(rt); }</pre>

2.2.24 Obtener codigo personalizado

Namespace	RFIDReaderAPI.RFIDReader._ReaderConfig
Function	static eAntennaNo GetCustomCode (String ConnID)
Parameter	// ConnID: Connection identifier
Return	Custom code
Remark	None
Example code	<pre>string tcp = "192.168.1.116:9090" RFIDReaderAPI.Interface.IAsynchronousMessage log = new Program(); if (RFIDReaderAPI.RFIDReader.CreateTcpConn(tcp, log)) { var rt = RFIDReader._ReaderConfig.GetCustomCode(tcp); Console.WriteLine(rt); }</pre>

2.2.25 Establecer control del zumbador

Namespace	RFIDReaderAPI.RFIDReader._ReaderConfig
Function	static String SetBuzzerControl(String ConnID, bool isOpen, bool isOftenRing)
Parameter	// ConnID: Connection identifier // isOpen: Whether to turn on the buzzer // isOftenRing: Set whether to keep beeping, false -- Ring once, true -- Keep ringing
Return	Result
Remark	None
Example code	<pre>string tcp = "192.168.1.116:9090"; RFIDReaderAPI.Interface.IAsynchronousMessage log = new Program(); if (RFIDReaderAPI.RFIDReader.CreateTcpConn(tcp, log)) { var rt = RFIDReader._ReaderConfig.SetBuzzerControl(tcp, true, true); Console.WriteLine(rt); }</pre>

2.2.26 Establecer interruptor del zumbador

Namespace	RFIDReaderAPI.RFIDReader._ReaderConfig
Function	static String SetBuzzerSwitch (String ConnID,String param)
Parameter	// ConnID: Connection identifier // param: 0 -- set the buzzer sounds when the tag is read, 1-- set the buzzer does not sound when the tag is read
Return	Result
Remark	None
Example code	<pre>string tcp = "192.168.1.116:9090"; RFIDReaderAPI.Interface.IAsynchronousMessage log = new Program(); if (RFIDReaderAPI.RFIDReader.CreateTcpConn(tcp, log)) { var rt = RFIDReader._ReaderConfig.SetBuzzerSwitch(tcp, "1"); Console.WriteLine(rt); }</pre>

2.2.27 Obtener el numero de serie del lector

Namespace	RFIDReaderAPI.RFIDReader._ReaderConfig
Function	static String GetSN(String ConnID)
Parameter	// ConnID: Connection identifier
Return	Reader Serial Number
Remark	None

Example code	<pre>string tcp = "192.168.1.116:9090"; RFIDReaderAPI.Interface.IAsynchronousMessage log = new Program(); if (RFIDReaderAPI.RFIDReader.CreateTcpConn(tcp, log)) { var rt = RFIDReader._ReaderConfig.GetSN(tcp); Console.WriteLine(rt); }</pre>
--------------	--

2.3 ConfiguracionesRFID

2.3.1 Formatear a configuracion de fabrica

Namespace	RFIDReaderAPI.RFIDReader._ReaderConfig
Function	static Int32 SetReaderRestoreFactory(String ConnID)
Parameter	// ConnID: connection identifier
Return	0: successful, other: failed
Remark	Restore all setting back to factory status. Please use this interface with caution (MAC address and reader time will not change)
Example code	<pre>string tcp = "192.168.1.116:9090" RFIDReaderAPI.Interface.IAsynchronousMessage log = new Program(); if (RFIDReaderAPI.RFIDReader.CreateTcpConn(tcp, log)) { int rt = RFIDReader._ReaderConfig.SetReaderRestoreFactory(tcp); if (rt == 0) Console.WriteLine("Restore factory ok"); else Console.WriteLine("Restore factory failed"); }</pre>

2.3.2 Establecer parametros banda base

Namespace	RFIDReaderAPI.RFIDReader._RFIDConfig
Function	static Int32 SetEPCBaseBandParam(String ConnID,Int32 basebandMode,Int32 qValue,Int32 session,Int32 searchType)
Parameter	// ConnID: connection identifier // basebandMode: EPC Base band speed(0~255, 255 is AUTO) (0-Tari=25us, FM0, LF=40KHz) (1-TTari=25us, Miller4, LF=250KHz) (2-Tari=25us, Miller4, LF=300KHz) (3-Tari=6.25us, FM0, LF=400KHz) (255-Auto) // qValue: 0~15, reader's initial Q value. // session: 0~3 // searchType: inventory Parameter (0 only use Flag A to inventory, 1 only use Flag B to inventory, 2 use both Flag A and Flag B in turn to inventory).
Return	0: successful; others: failed
Remark	

Example code	<pre>string tcp = "192.168.1.116:9090"; RFIDReaderAPI.Interface.IAsynchronousMessage log = new Program(); if (RFIDReaderAPI.RFIDReader.CreateTcpConn(tcp, log)) { int rt = RFIDReader._RFIDConfig.SetEPCBaseBandParam(tcp,1,0,0,2); if (rt == 0) Console.WriteLine("SET OK "); else Console.WriteLine("SET FAILED "); }</pre>
--------------	---

2.3.3 Obtener parametros banda base

Namespace	RFIDReaderAPI.RFIDReader._RFIDConfig
Function	static String GetEPCBaseBandParam(String ConnID)
Parameter	// ConnID: connection identifier
Return	basebandMode qValue session searchType
Remark	// basebandMode: EPC Base band speed(0~255, 255 is AUTO) (0-Tari=25us, FM0, LHF=40KHz) (1-TTari=25us, Miller4, LHF=250KHz) (2-Tari=25us, Miller4, LHF=300KHz) (3-Tari=6.25us, FM0, LHF=400KHz) (255-Auto) // qValue: 0~15, reader's initial Q value. // session: 0~3 // searchType: inventory Parameter (0 only use Flag A to inventory, 1 only use Flag B to inventory, 2 use both Flag A and Flag B in turn to inventory).
Example code	<pre>string tcp = "192.168.1.116:9090" RFIDReaderAPI.Interface.IAsynchronousMessage log = new Program(); if (RFIDReaderAPI.RFIDReader.CreateTcpConn(tcp, log)) { var rt = RFIDReader._RFIDConfig.GetEPCBaseBandParam(tcp); Console.WriteLine(rt); }</pre>

2.3.4 Establecer potencia de salida del puerto de la antena

Namespace	RFIDReaderAPI.RFIDReader._RFIDConfig
Function	static Int32 SetANTPowerParam(String ConnID, Dictionary<Int32, Int32> dicPower)
Parameter	// ConnID: connection identifier //dicPower: antenna number and power level key-value pair e.g.: SetANTPowerParam("192.168.1.116:9090",new Dictionary<Int32, Int32>(){1,30},{2,30}); This method will set Ant1 and Ant2 's power to 30
Return	0: successful; others: failed
Remark	Set each antenna's output power
Example code	<pre>string tcp = "192.168.1.116:9090" RFIDReaderAPI.Interface.IAsynchronousMessage log = new Program(); if (RFIDReaderAPI.RFIDReader.CreateTcpConn(tcp, log)) {</pre>

```
int rt = RFIDReader._RFIDConfig.SetANTPowerParam(tcp, new Dictionary<int, int>()
{{ 1, 15 }});
if (rt == 0) Console.WriteLine("SET OK ");
else Console.WriteLine("SET FAILED ");
}
```

2.3.5 Obtener potencia de salida del puerto de la antena

Namespace	RFIDReaderAPI.RFIDReader._RFIDConfig
Function	static Dictionary<Int32, Int32> GetANTPowerParam(String ConnID)
Parameter	// ConnID: connection identifier
Return	Can refer to the Dictionary<Int32, Int32> of 2.3.4 antenna power setting
Remark	
Example code	<pre>string tcp = "192.168.1.116:9090" RFIDReaderAPI.Interface.IAsynchronousMessage log = new Program(); if (RFIDReaderAPI.RFIDReader.CreateTcpConn(tcp, log)) { var rt = RFIDReader._RFIDConfig.GetANTPowerParam(tcp); Console.WriteLine(rt); }</pre>

2.3.6 Establecer parametros de carga de datos de etiquetas

Namespace	RFIDReaderAPI.RFIDReader._RFIDConfig
Function	static Int32 SetTagUpdateParam(String ConnID, Int32 repeatTimeFilter, Int32 RSSIFilter)
Parameter	// ConnID: connection identifier // repeatTimeFilter: repeat tag uploading filtration time // RSSIFilter: RSSI filter
Return	0: successful, others: failed
Remark	repeatTimeFilter value range: 0 ~ 65535. RSSIFilter value range: 0 ~ 255
Example code	<pre>string tcp = "192.168.1.116:9090" RFIDReaderAPI.Interface.IAsynchronousMessage log = new Program(); if (RFIDReaderAPI.RFIDReader.CreateTcpConn(tcp, log)) { int rt = RFIDReader._RFIDConfig.SetTagUpdateParam(tcp, 10, 0); if (rt == 0) Console.WriteLine("SET OK"); else Console.WriteLine("SET FAILED"); }</pre>

2.3.7 Obtener parametros de carga de datos de etiquetas

Namespace	RFIDReaderAPI.RFIDReader._RFIDConfig
Function	static String GetTagUpdateParam(String ConnID)
Parameter	// ConnID: connection identifier

Return	<code>repeatTimeFilter RSSIFilter.</code>
Remark	<pre>// repeatTimeFilter: repeat tag upload filter time (unit: 10ms) // RSSIFilter: RSSI filter repeatTimeFilter value range: 0 ~ 65535 RSSIFilter value range: 0 ~ 255</pre>
Example code	<pre>string tcp = "192.168.1.116:9090" RFIDReaderAPI.Interface.IAsynchronousMessage log = new Program(); if (RFIDReaderAPI.RFIDReader.CreateTcpConn(tcp, log)) { var rt = RFIDReader._RFIDConfig.GetTagUpdateParam(tcp); Console.WriteLine(rt); }</pre>

2.3.8 Obtener propiedad de dispositivo

Namespace	<code>RFIDReaderAPI.RFIDReader._RFIDConfig</code>
Function	<code>static String GetReaderProperty(String ConnID)</code>
Parameter	// ConnID: connection identifier
Return	Minimum output power maximum output power number of antennas band list list of RFID protocols.
Remark	Power unit is dB
Example code	<pre>string tcp = "192.168.1.116:9090" RFIDReaderAPI.Interface.IAsynchronousMessage log = new Program(); if (RFIDReaderAPI.RFIDReader.CreateTcpConn(tcp, log)) { var rt = RFIDReader._RFIDConfig.GetReaderProperty(tcp); Console.WriteLine(rt); }</pre>

2.3.9 Establecer rango de frecuencia de RF

Namespace	<code>RFIDReaderAPI.RFIDReader._RFIDConfig</code>
Function	<code>static Int32 SetReaderRF(String ConnID, eRF_Range eRF_Range)</code>
Parameter	<pre>// ConnID: connection identifier // eRF_Range: eRF_Range.GB_920_to_925MHz eRF_Range.GB_840_to_845MHz eRF_Range.GB_920_to_925MHz_and_GB_840_to_845MHz eRF_Range.FCC_902_to_928MHz eRF_Range.ETSI_866_to_868MHz eRF_Range.JP_916_to_921MHz eRF_Range.TW_922_to_927MHz eRF_Range.ID_923_to_925MHz</pre>

	eRF_Range.RUS_866_to_867MHz
Return	0: successful; others: failed
Remark	Note: the power of all antennas will be reset to 30 after the RF frequency is modified
Example code	<pre>string tcp = "192.168.1.116:9090" RFIDReaderAPI.Interface.IAsynchronousMessage log = new Program(); if (RFIDReaderAPI.RFIDReader.CreateTcpConn(tcp, log)) { int rt = RFIDReader._RFIDConfig.SetReaderRF(tcp,eRF_Range.ETSI_866_to_868MHz); if (rt == 0) Console.WriteLine("SET OK"); else Console.WriteLine("SET FAILED"); }</pre>

2.3.10 Obtener rango de frecuencia de RF

Namespace	RFIDReaderAPI.RFIDReader._RFIDConfig
Function	static String GetReaderRF(String ConnID)
Parameter	// ConnID: connection identifier
Return	eRF_Range.GB_920_to_925MHz eRF_Range.GB_840_to_845MHz eRF_Range.GB_920_to_925MHz_and_GB_840_to_845MHz eRF_Range.FCC_902_to_928MHz eRF_Range.ETSI_866_to_868MHz eRF_Range.JP_916_to_921MHz eRF_Range.TW_922_to_927MHz eRF_Range.ID_923_to_925MHz eRF_Range.RUS_866_to_867MHz
Remark	None
Example code	<pre>string tcp = "192.168.1.116:9090" RFIDReaderAPI.Interface.IAsynchronousMessage log = new Program(); if (RFIDReaderAPI.RFIDReader.CreateTcpConn(tcp, log)) { var rt = RFIDReader._RFIDConfig.GetReaderRF(tcp); Console.WriteLine(rt); }</pre>

2.3.11 Establecer puntos de frecuencia de trabajo de RF

Namespace	RFIDReaderAPI.RFIDReader._RFIDConfig
Function	static Int32 SetReaderWorkFrequency(String ConnID, eWF_Mode wfMode, List<eGB_840_to_845MHz> ListGB_840_to_845MHz)
Parameter	// ConnID: connection identifier //wfMode: eWF_Mode.Specified, eWF_Mode.Auto. //eGB_840_to_845MHz: eGB_840_to_845MHz._840_625f,

	<p>eGB_840_to_845MHz._840_875f, eGB_840_to_845MHz._841_125f, eGB_840_to_845MHz._841_375f, eGB_840_to_845MHz._841_625f, eGB_840_to_845MHz._841_875f, eGB_840_to_845MHz._842_125f, eGB_840_to_845MHz._842_375f, eGB_840_to_845MHz._842_625f, eGB_840_to_845MHz._842_875f, eGB_840_to_845MHz._843_125f, eGB_840_to_845MHz._843_375f, eGB_840_to_845MHz._843_625f, eGB_840_to_845MHz._843_875f, eGB_840_to_845MHz._844_125f, eGB_840_to_845MHz._844_375f.</p>
Return	0: successful; others: failed
Remark	<p>This function has many overload, other frequency setting only need change function eGB_840_to_845MHz to</p> <p>GB_920_to_925MHz, GB_840_to_845MHz, GB_920_to_925MHz_and_GB_840_to_845MHz, FCC_902_to_928MHz, ETSI_866_to_868MHz, JP_916_to_921MHz, TW_922_to_927MHz, ID_923_to_925MHz, RUS_866_to_867MHz</p> <p>then you could set related frequency points</p>
Example code	<pre>string tcp = "192.168.1.116:9090" RFIDReaderAPI.Interface.IAsynchronousMessage log = new Program(); if (RFIDReaderAPI.RFIDReader.CreateTcpConn(tcp, log)) { //After setting Auto, the List no need to be passed, but if it is not Auto, the frequency point enumeration set needs to be instantiated int rt = RFIDReader._RFIDConfig.SetReaderWorkFrequency(tcp,eWF_Mode.Auto); if (rt == 0) Console.WriteLine("SET OK"); else Console.WriteLine("SET FAILED"); }</pre>

2.3.12 Obtener puntos de frecuencia de trabajo de RF

Namespace	RFIDReaderAPI.RFIDReader._RFIDConfig
Function	static String GetReaderWorkFrequency(String ConnID)
Parameter	// ConnID: connection identifier
Return	Mode Frequency range Frequency points e.g.: Auto GB_920_to_925MHz 920.625,920.875

Remark	None
Example code	<pre>string tcp = "192.168.1.116:9090" RFIDReaderAPI.Interface.IAsynchronousMessage log = new Program(); if (RFIDReaderAPI.RFIDReader.CreateTcpConn(tcp, log)) { var rt = RFIDReader._RFIDConfig.GetReaderWorkFrequency(tcp); Console.WriteLine(rt); }</pre>

2.3.13 Configurar el modo de suspensión automática del dispositivo

Namespace	RFIDReaderAPI.RFIDReader._RFIDConfig
Function	static Int32 SetReaderAutoSleepParam(String ConnID, bool Switch, String time)
Parameter	// ConnID: connection identifier, Switch: on / off, time: sleep time
Return	0: successful; others: failed
Remark	Switch: true-open, false-close Sleep time unit: 10ms
Example code	<pre>string tcp = "192.168.1.116:9090" RFIDReaderAPI.Interface.IAsynchronousMessage log = new Program(); if (RFIDReaderAPI.RFIDReader.CreateTcpConn(tcp, log)) { int rt = RFIDReader._RFIDConfig.SetReaderAutoSleepParam(tcp, true, "100"); if (rt == 0) Console.WriteLine("SET OK"); else Console.WriteLine("SET FAILED"); }</pre>

2.3.14 Obtener el modo de suspensión automática del dispositivo

Namespace	RFIDReaderAPI.RFIDReader._RFIDConfig
Function	static String GetReaderAutoSleepParam(String ConnID)
Parameter	// ConnID: connection identifier
Return	Close or Open "sleep time"
Remark	Unit is 10ms
Example code	<pre>string tcp = "192.168.1.116:9090" RFIDReaderAPI.Interface.IAsynchronousMessage log = new Program(); if (RFIDReaderAPI.RFIDReader.CreateTcpConn(tcp, log)) { var rt = RFIDReader._RFIDConfig.GetReaderAutoSleepParam(tcp); Console.WriteLine(rt); }</pre>

2.3.15 Configurar la autocomprobación de la red del lector

Namespace	RFIDReaderAPI.RFIDReader._RFIDConfig
Function	static Int32 SetReaderSelfCheck(String ConnID, bool Switch, String ip)
Parameter	// ConnID: connection identifier, Switch: on / off, ip: ip address
Return	0: successful; others: failed
Remark	Switch: true-open, false-close
Example code	<pre>string tcp = "192.168.1.116:9090" RFIDReaderAPI.Interface.IAsynchronousMessage log = new Program(); if (RFIDReaderAPI.RFIDReader.CreateTcpConn(tcp, log)) { int rt = RFIDReader._ReaderConfig.SetReaderSelfCheck(tcp, true, " IP address that need to be self-checked"); if (rt == 0) Console.WriteLine("SET OK "); else Console.WriteLine("SET FAILED "); }</pre>

2.3.16 Obtener el estado de autocomprobación de la red del lector

Namespace	RFIDReaderAPI.RFIDReader._RFIDConfig
Function	static String GetReaderSelfCheck(String ConnID)
Parameter	// ConnID: connection identifier
Return	Close or Open "IP address"
Remark	
Example code	<pre>string tcp = "192.168.1.116:9090" RFIDReaderAPI.Interface.IAsynchronousMessage log = new Program(); if (RFIDReaderAPI.RFIDReader.CreateTcpConn(tcp, log)) { var rt = RFIDReader._ReaderConfig.GetReaderSelfCheck(tcp); Console.WriteLine(rt); }</pre>

2.3.17 Establecer activación de antena

Namespace	RFIDReaderAPI.RFIDReader._RFIDConfig
Function	static Int32 SetReaderANT(String ConnID, eAntennaNo antNum)
Parameter	// ConnID: connection identifier, antNum: antenna number enumeration
Return	0: successful; others: failed
Remark	Enable ant1 and ant2, e.g.: eAntennaNo._1 eAntennaNo._2
Example code	<pre>string tcp = "192.168.1.116:9090" RFIDReaderAPI.Interface.IAsynchronousMessage log = new Program(); if (RFIDReaderAPI.RFIDReader.CreateTcpConn(tcp, log)) {</pre>

```
int rt =
RFIDReader._RFIDConfig.SetReaderANT(tcp,eAntennaNo._1|eAntennaNo._2);
if (rt == 0) Console.WriteLine("SET OK");
else Console.WriteLine("SET FAILED");
}
```

2.3.18 Obtener el estado de la activación de la antena

Namespace	RFIDReaderAPI.RFIDReader._RFIDConfig
Function	static eAntennaNo GetReaderANT(String ConnID)
Parameter	// ConnID: connection identifier
Return	Refer to 2.3.17 - eAntennaNo
Remark	None
Example code	<pre>string tcp = "192.168.1.116:9090" RFIDReaderAPI.Interface.IAsynchronousMessage log = new Program(); if (RFIDReaderAPI.RFIDReader.CreateTcpConn(tcp, log)) { var rt = RFIDReader._RFIDConfig.GetReaderANT(tcp); Console.WriteLine(rt); }</pre>

Namespace	RFIDReaderAPI.RFIDReader._RFIDConfig
Function	static String GetReaderANT2(String ConnID)
Parameter	// ConnID: connection identifier
Return	Antenna numbers already enabled, numbers apart by "," such as 1,6,8
Remark	None
Example code	<pre>string tcp = "192.168.1.116:9090" RFIDReaderAPI.Interface.IAsynchronousMessage log = new Program(); if (RFIDReaderAPI.RFIDReader.CreateTcpConn(tcp, log)) { var rt = RFIDReader._RFIDConfig.GetReaderANT2(tcp); Console.WriteLine(rt); }</pre>

2.3.19 Obtener temperatura RFID

Namespace	RFIDReaderAPI.RFIDReader._RFIDConfig
Function	static String GetRFIDTemperature (String ConnID)
Parameter	// ConnID: connection identifier
Return	Temperature value
Remark	None
Example code	<pre>string tcp = "192.168.1.116:9090" RFIDReaderAPI.Interface.IAsynchronousMessage log = new Program();</pre>

```

if (RFIDReaderAPI.RFIDReader.CreateTcpConn(tcp, log))
{
    var rt = RFIDReader._RFIDConfig.GetRFIDTemperature (tcp);
    Console.WriteLine(rt);
}
    
```

2.3.20 Configuración de expansión de banda base

Namespace	RFIDReaderAPI.RFIDReader._RFIDConfig
Function	public Int32 SetEPCBaseExpandBandParam(string ConnID, Int32 tagFocus, Int32 fastId, Int32 maxQ, Int32 mixQ, Int32 tmult, Int32 antModel, Int32 rCount, Int32 residenceTime, Int32 antSleepTime)
Parameter	// ConnID: connection identifier // Impinj expansion parameters // tagFocus: 0 No, 1 yes // fastId: 0 No, 1 yes // DQN expansion parameters // maxQ: Maximum Q value // mixQ: Minimum Q value // tmult: tmult // AST expansion parameters // antModel: 0 Switch immediately without tags, 1 running out of residence time // rCount: retry times // residenceTime: antenna residence time // AST2 expansion parameters // antSleepTime: Antenna switching waiting time
Return	0: successful; others: failed
Remark	None
Example code	<pre> string tcp = "192.168.1.116:9090" RFIDReaderAPI.Interface.IAsynchronousMessage log = new Program(); if (RFIDReaderAPI.RFIDReader.CreateTcpConn(tcp, log)) { var rt = RFIDReader._RFIDConfig.SetEPCBaseExpandBandParam (tcp,1,1,4,1,0,0,10,10,20); Console.WriteLine(rt); } </pre>

2.4 Operación GPIO

2.4.1 Establecer parámetros de activación de GPI

Namespace	RFIDReaderAPI.RFIDReader._ReaderConfig
Function	static Int32 SetReaderGPIParam(String ConnID, eGPI GPINum,

	eTriggerStart triggerStart, eTriggerCode triggerCode, eTriggerStop triggerStop, String DelayTime, Boolean isUpload)
Parameter	<pre>// ConnID: connection identifier // GPINum: eGPI._1,eGPI._2,eGPI._3,eGPI._4; //triggerStart: eTriggerStart.OFF,eTriggerStart.Low_level,eTriggerStart.High_level, eTriggerStart.Rising_edge,eTriggerStart.Falling_edge,eTriggerStart.Any_edge; //triggerCode: triggerCode.Single_Antenna_read_EPC, triggerCode.Single_Antenna_read_EPC_and_TID, triggerCode.Double_Antenna_read_EPC, triggerCode.Double_Antenna_read_EPC_and_TID, triggerCode.Four_Antenna_read_EPC, triggerCode.Four_Antenna_read_EPC_and_TID; //triggerStop: eTriggerStop.OFF,eTriggerStop.Low_level,eTriggerStop.High_level, eTriggerStop.Rising_edge,eTriggerStop.Falling_edge,eTriggerStop.Any_edge, eTriggerStop.Delay; //DelayTime: unit is 10ms //isUpload: when triggerStop is eTriggerStop.OFF, whether to upload the GPI trigger status, true – upload, false – Don't upload e.g.: SetReaderGPIParam("192.168.1.116:9090",eGPI._2,eTriggerStart.Low_level, triggerCode.Double_Antenna_read_EPC_and_TID,eTriggerStop.Dealy,"100",false); This sample code is to set a low level trigger start on GPI2 port and execute trigger code when the GPI2 be triggered by low level, end after 1000ms delay.</pre>
Return	0: successful; others: failed
Remark	<p>Stop delay time: unit is 10ms (when Trigger stop condition is "Delay stop" effective) Related operation performance refers to the RFIDreader demo software Detailed GPI trigger parameter callback, please refer to 2.7 callback interface instruction - GPIControlMsg();</p>
Example code	<pre>string tcp = "192.168.1.116:9090" RFIDReaderAPI.Interface.IAsynchronousMessage log = new Program(); if (RFIDReaderAPI.RFIDReader.CreateTcpConn(tcp, log)) { int rt = RFIDReader._ReaderConfig.SetReaderGPIParam (tcp, eGPI._1, eTriggerStart.High_level, eTriggerCode.Double_Antenna_read_EPC, eTriggerStop.Low_level, "100", true); if (rt == 0) Console.WriteLine("SET OK"); else Console.WriteLine("SET FAILED"); }</pre>

2.4.2 Obtener parametros de activacion de GPI

Namespace	RFIDReaderAPI.RFIDReader._ReaderConfig
Function	static String GetReaderGPIParam(String ConnID, eGPI GPINum)
Parameter	<pre>// ConnID: connection identifier // GPONum: GPI._1,GPI._2,GPI._3,GPI._4. e.g. GetReaderGPIParam("192.168.1.116:9090",GPI._1);</pre>
Return	"trigger GPI number Trigger start condition Trigger code Trigger stop condition stop delay time isUpload" e.g. "GPI1 Low level Double Antenna read EPC Delay 100 ON"
Remark	Stop delay time: unit is 10ms (when Trigger stop condition is "Delay stop" effective)

	<p>isUpload: true – upload, false – Don't upload</p> <p>Related operation performance refers to the RFIDreader demo software</p>
Example code	<pre>string tcp = "192.168.1.116:9090" RFIDReaderAPI.Interface.IAsynchronousMessage log = new Program(); if (RFIDReaderAPI.RFIDReader.CreateTcpConn(tcp, log)) { var rt = RFIDReader._ReaderConfig.GetReaderGPIParam(tcp, eGPI._1); Console.WriteLine(rt); }</pre>

2.4.3 Obtener estado de GPI

Namespace	RFIDReaderAPI.RFIDReader._ReaderConfig
Function	static String GetReaderGPIState(String ConnID)
Parameter	// ConnID: connection identifier e.g. GetReaderGPIState ("192.168.1.116:9090");
Return	e.g. "1,Low & 2,High", this return: 1# GPI port is in low level, 2# GPI port in high level
Remark	This method is to get GPI present level state, no business with trigger event Detailed GPI trigger parameter callback, please refer to 2.7 callback interface instruction - GPIControlMsg();
Example code	<pre>string tcp = "192.168.1.116:9090" RFIDReaderAPI.Interface.IAsynchronousMessage log = new Program(); if (RFIDReaderAPI.RFIDReader.CreateTcpConn(tcp, log)) { var rt = RFIDReader._ReaderConfig.GetReaderGPIState(tcp); Console.WriteLine(rt); }</pre>

Namespace	RFIDReaderAPI.RFIDReader._ReaderConfig
Function	static Int32 SetReaderGPOState(String ConnID, Dictionary<eGPO, eGPOState> dicState)
Parameter	// ConnID: connection identifier // dicState: GPO serial number and level related key-value pair e.g. SetReaderGPOState ("192.168.1.116:9090",new Dictionary<eGPO, eGPOState> {{1,0},{2,1}}); this method is to set #1 GPO port into low level (0), and set #2 GPO port into High level (1)
Return	0: successful; others: failed
Remark	None
Example code	<pre>string tcp = "192.168.1.116:9090" RFIDReaderAPI.Interface.IAsynchronousMessage log = new Program(); if (RFIDReaderAPI.RFIDReader.CreateTcpConn(tcp, log)) { int rt = RFIDReader._ReaderConfig.SetReaderGPOState</pre>

```
(tcp, new Dictionary<eGPO, eGPOState>() { {eGPO._1,eGPOState.High }});
if (rt == 0) Console.WriteLine("SET OK");
else Console.WriteLine("SET FAILED");
}
```

2.4.4 Establecer estado de nivel de GPO

2.4.5 Establecer parámetros Wiegand

Namespace	RFIDReaderAPI.RFIDReader._ReaderConfig
Function	static Int32 SetReaderWG(String ConnID, eWiegandSwitch wiegandSwitch, eWiegandFormat wiegandFormat, eWiegandDetails param, int OutputAddress=0)
Parameter	<p>// ConnID: connection identifier</p> <p>// eWiegandSwitch:</p> <p style="padding-left: 40px;">eWiegandSwitch.Close, eWiegandSwitch.Open.</p> <p>// eWiegandFormat:</p> <p style="padding-left: 40px;">eWiegandFormat.Wiegand26, eWiegandFormat.Wiegand34, eWiegandFormat.Wiegand66</p> <p>// eWiegandDetails:</p> <p style="padding-left: 40px;">eWiegandDetails.end_of_the_EPC_data, eWiegandDetails.end_of_the_TID_data.</p> <p>// OutputAddress: Output wiegand data corresponding to the starting address e.g. SetReaderWG("192.168.1.116:9090",eWiegandSwitch.Open, eWiegandFormat.Wiegand26,eWiegandDetails.end_of_the_TID_data);</p> <p>this method is to open Wiegand, data format is Wiegand 26, appointed transferred data is TID end data</p>
Return	0: successful; others: failed
Remark	None
Example code	<pre>string tcp = "192.168.1.116:9090" RFIDReaderAPI.Interface.IAsynchronousMessage log = new Program(); if (RFIDReaderAPI.RFIDReader.CreateTcpConn(tcp, log)) { int rt = RFIDReader._ReaderConfig.SetReaderWG (tcp ,eWiegandSwitch.Open,eWiegandFormat.Wiegand34,eWiegandDetails.end_of_the_ EPC_data,2); if (rt == 0) Console.WriteLine("SET OK"); else Console.WriteLine("SET FAILED"); }</pre>

2.4.6 Obtener parametros Wiegand

Namespace	RFIDReaderAPI.RFIDReader._ReaderConfig
Function	static String GetReaderWG(String ConnID)
Parameter	// ConnID: connection identifier
Return	// Return: Wiegand switch Wiegand format Wiegand transferred data e.g. Return "Open Wiegand66 end_of_the_EPC_data" this return means switch is open, communication format is Wiegand 66, appointed transferred data is EPC end data
Remark	None
Example code	<pre>string tcp = "192.168.1.116:9090" RFIDReaderAPI.Interface.IAsynchronousMessage log = new Program(); if (RFIDReaderAPI.RFIDReader.CreateTcpConn(tcp, log)) { var rt = RFIDReader._ReaderConfig.GetReaderWG(tcp); Console.WriteLine(rt); }</pre>

2.5 6C Operación de etiqueta

2.5.1 Leer etiqueta

Namespace	RFIDReaderAPI.RFIDReader._Tag6C
Function1	static int GetEPC(string ConnID, eAntennaNo antNum, eReadType readType, eMatchCode matchType = eMatchCode.None, string matchCode = "", int matchWordStartIndex = -1, string accessPassword = "") // only read EPC // ConnID: connection identifier // antNum: Antenna number enumeration. Appoint Antenna 1 and 2 working at same time; e.g.: eAntennaNo_1 eAntennaNo_2 // ReadType: read type enumeration, Single or Inventory (one-time or cyclically reading) Optional parameters :(all Tag6C functions will contain optional parameters, which will not be specified in the future) // matchType: matching area EPC TID // matchCode: tag data need to be matched // matchWordStartIndex: matching Data starting index // accessPassword: Tag access password Note: matchType, matchCode and matchWordStartIndex need to be used together.
Function2	int GetEPC_TID(string ConnID, eAntennaNo antNum, eReadType readType, int length = -1, eMatchCode matchType = eMatchCode.None, string matchCode = "", int matchWordStartIndex = -1, string accessPassword = "") // read EPC and TID // length: optional parameter, reading length of TID
Function3	int GetEPC_UserData(string ConnID, eAntennaNo antNum, eReadType

	<pre>readType, int readStart, int readLen, eMatchCode matchType = eMatchCode.None, string matchCode = "", int matchWordStartIndex = -1, string accessPassword = "") // Read EPC and UserData // readStart starting index of reading user area // readLen reading length of user area (unit: Word)</pre>
Function4	<pre>int GetEPC_ReservedData(string ConnID, eAntennaNo antNum, eReadType readType, int readStart, int readLen, eMatchCode matchType = eMatchCode.None, string matchCode = "", int matchWordStartIndex = -1, string accessPassword = "") //read EPC and password area // readStart starting index of reading password area // readLen reading length of password area (unit: Word)</pre>
Function5	<pre>int GetEPC_TID_UserData(string ConnID, eAntennaNo antNum, eReadType readType, int readStart, int readLen, eMatchCode matchType = eMatchCode.None, string matchCode = "", int matchWordStartIndex = -1, string accessPassword = "") // Read EPC,TID and UserData // readStart starting index of reading user area // readLen reading length of user area (unit: Word)</pre>
Function6	<pre>int GetEPC_TID_ReservedData(string ConnID, eAntennaNo antNum, eReadType readType, int ReservedReadStart, int ReservedReadLen, eMatchCode matchType = eMatchCode.None, string matchCode = "", int matchWordStartIndex = -1, string accessPassword = "") // Read EPC,TID and password area // ReservedReadStart starting index of reading password area // ReservedReadLen reading length of password area (unit: Word)</pre>
Function7	<pre>int GetEPC_TID_UserData_ReservedData(string ConnID, eAntennaNo antNum, eReadType readType, int readStart, int readLen, int ReservedReadStart, int ReservedReadLen, eMatchCode matchType = eMatchCode.None, string matchCode = "", int matchWordStartIndex = -1, string accessPassword = "") // Read EPC,TID,UserData and password // readStart starting index of reading user area // readLen reading length of user area (unit: Word) // ReservedReadStart starting index of reading password area // ReservedReadLen reading length of password area (unit: Word)</pre>
Function8	<pre>int GetEPC_With_G2V2Authenticate(string ConnID, eAntennaNo antNum, eReadType readType, G2V2AuthenticateModel g2v2 , eMatchCode matchType = eMatchCode.None, string matchCode = "", int matchWordStartIndex = -1, string accessPassword = "") // read EPC and G2V2 data G2V2AuthenticateModel: Set the C2G2 authentication parameters</pre>

	<pre>//_AuthMethod: TAM Authentication Method //_CustomData: TAM Custom Data //_KeyID: TAM KeyID //_Profile: memory parameter. 0,EPC area; 1, TID area; 2, user area //_Offset: Define the first address of the custom data block. //_BlockCount: Block Count //_ProtMode: Specifies the mode of operation that shall be used for the encipherment and/or protection of the custom data //G2V2Authenticate(): Converts the decimal parameters to a hexadecimal String, returning a String // accessPassword: Tag access password</pre>
Function9	<pre>int GetEPC_TID_UserData_With_G2V2Authenticate (string ConnID, eAntennaNo antNum, eReadType readType, int readStart, int readLen, G2V2AuthenticateModel g2v2, eMatchCode matchType = eMatchCode.None, string matchCode = "", int matchWordStartIndex = -1, string accessPassword = "") // read EPC,TID,UserData and G2V2 // readStart: starting index of reading user area // readLen: reading length of user area (unit: Word)</pre>
Function10	<pre>int GetEPC_TID_With_G2V2Authenticate(string ConnID, eAntennaNo antNum, eReadType readType, G2V2AuthenticateModel g2v2, eMatchCode matchType = eMatchCode.None, string matchCode = "", int matchWordStartIndex = -1, string accessPassword = "") // read TID, EPC and G2V2 data</pre>
Function11	<pre>int GetEPC_RFMicron_Temperature(string ConnID, eAntennaNo antNum, eReadType readType) // read EPC and RFMicron temperature tag</pre>
Function12	<pre>int GetEPC_EM4325_Temperature(string ConnID, eAntennaNo antNum, eReadType readType) //read EPC and EM4325 temperature tag</pre>
Function13	<pre>int GetEPC_EpcData(string ConnID, eAntennaNo antNum, eReadType readType, int readStart, int readLen, eMatchCode matchType = eMatchCode.None, string matchCode = "", int matchWordStartIndex = -1, string accessPassword = "") // read EPC and EpcData // readStart: starting index of reading EPCData area // readLen: data length of reading EPCData area (unit: Word)</pre>
Function14	<pre>int GetEPC_TID_EpcData(string ConnID, eAntennaNo antNum, eReadType readType, int readStart, int readLen, eMatchCode matchType = eMatchCode.None, string matchCode = "", int matchWordStartIndex = -1, string accessPassword = "") // read EPC,TID and EpcData // readStart: starting index of reading EPCData area // readLen: data length of reading EPCData area (unit: Word)</pre>
Function15	<pre>int GetEPC_TID_UserData_JoharTemp(string ConnID, eAntennaNo antNum, eReadType readType, eMatchCode matchType = eMatchCode.None, string</pre>

	<pre>matchCode = "", int matchWordStartIndex = -1, string accessPassword = "", bool IsJoharTemp = false) // This function will read the data of multiple data areas of Johar LTU32 temperature tag at the same time, including EPC, TID, UserData and JoharTemp temperature // RFIDReader._Tag6C.GetEPC_TID_UserData_JoharTemp(ConnID, eAntennaNo._1, eReadType.Inventory, IsJoharTemp: true);</pre>
Parameter	refers to each function instruction
Return	True: successful; false: failed
Remark	<ol style="list-style-type: none"> 1. For detailed Return , please kindly follow AppendixA 2. Stop inventory (cycle) reading using "stop" instruction. 3. Difference between inventory and single reading is that single read automatically stops reading after one time reading, but inventory read requires a stop function to stop reading. 4. The same part for inventory and single reading is that after the last tag data is uploaded, they will notify PC side through asynchronous callback that tag upload finished, please refer to 2.7 callback interface instruction - OutPutTagsOver();
Example code	<pre>Program log = new Program(); if (RFIDReader.CreateSerialConn(SerialConnId, log)) { int rt = RFIDReader._Tag6C.GetEPC(SerialConnId, eAntennaNo._1, eReadType.Inventory, matchType: eMatchCode.TID, matchCode: tid, matchWordStartIndex: 0, accessPassword: "00000000"); RFIDReader._Tag6C.Stop(SerialConnId); rt = RFIDReader._Tag6C.GetEPC_TID_UserData_ReservedData(SerialConnId, eAntennaNo._1, eReadType.Inventory, 0,4,0, 4, matchType: eMatchCode.TID, matchCode: tid, matchWordStartIndex: 0, accessPassword: "00000000"); // If you use only partial optional parameters, it is recommended to fill in the parameters with the format parameter name: value //eg: accessPassword: "00000000" If you need to fill in all the parameters, just fill in the order RFIDReader._Tag6C.Stop(SerialConnId); } public void OutPutTags(RFIDReaderAPI.Models.Tag_Model tag) { Console.WriteLine("EPC:" + tag.EPC + " - TID:" + tag.TID + " - UserData:" + tag.UserData + " - TagetData:" + tag.TagetData); } // read operation finished callback function public void OutPutTagsOver() { Console.WriteLine("read operation finished"); }</pre>

2.5.2 Escribir etiqueta

2.5.2.1 Escribir EPC

Namespace	RFIDReaderAPI.RFIDReader._Tag6C
Function1	<p>string WriteEPC(string ConnID, eAntennaNo antNum, string sWriteData, string dataStartIndex = "", eMatchCode matchType = eMatchCode.None, string matchCode = "", int matchWordStartIndex = -1, string accessPassword = "")</p> <p>// ConnID: connection identifier // antNum: Antenna number enumeration. Appoint Antenna 1 and 2 working at same time; e.g.: eAntennaNo._1 eAntennaNo._2 // sWriteData: data need to be written(hexadecimal String)</p> <p>Optional parameters :</p> <p>// matchType: matching area EPC TID // matchCode: tag data need to be matched // matchWordStartIndex: matching Data starting index // accessPassword: Tag access password // dataStartIndex: starting index to be written</p> <p>Note: matchType, matchCode and matchWordStartIndex need to be used together.</p>
Parameter	Please refer to Function Remark.
Return	True: successful; others: failed
Remark	<ol style="list-style-type: none"> 1. Suggest using matched TID to write 2. For detailed Return, refers to Appendix A 3. If the length of EPC data to be written not a multiple of 4, then 0 will be added up, e.g. if we want to write 201807 to EPC area, actually the data 20180700 will be written to tag.
Example code	<pre> Program log = new Program(); if (RFIDReader.CreateSerialConn(SerialConnId, log)) { string srt = RFIDReader._Tag6C.WriteEPC(SerialConnId, eAntennaNo._1, "88888888", matchType: eMatchCode.TID, matchCode: tid, matchWordStartIndex: 0, accessPassword: "11111111"); Console.WriteLine("Write result: " + srt); } </pre>

2.5.2.2 Escribir datos de usuario

Namespace	RFIDReaderAPI.RFIDReader._Tag6C
Function1	<p>static Int32 WriteUserData(String ConnID, eAntennaNo antNum, String sWriteData, Int32 offset, eMatchCode matchType = eMatchCode.None, string matchCode = "", int matchWordStartIndex = -1, string accessPassword = "")</p> <p>// ConnID: connection identifier // antNum: Antenna number enumeration. Appoint Antenna 1 and 2 working at same time; e.g.: eAntennaNo._1 eAntennaNo._2 // sWriteData: data to be written (Hexadecimal string) // offset: the offset of user area, that is, the number of 0 before writing data</p> <p>Optional parameters:</p>

	<pre>// matchType: matching area EPC TID // matchCode: tag data need to be matched // matchWordStartIndex: matching Data starting index // accessPassword: Tag access password // dataStartIndex: starting index to be written</pre> <p>Note: matchType, matchCode and matchWordStartIndex need to be used together.</p>
Parameter	Please refer to FunctionRemark.
Return	True: successful; others: failed
Remark	<ol style="list-style-type: none"> 1. Suggest using matched TID to write 2. For detailed Return refers to Appendix A
Example code	<pre>Program log = new Program(); if (RFIDReader.CreateSerialConn(SerialConnId, log)) { string srt = RFIDReader._Tag6C.WriteUserData(SerialConnId, eAntennaNo._1, "88888888",0, matchType: eMatchCode.TID, matchCode: tid, matchWordStartIndex: 0, accessPassword: "11111111"); Console.WriteLine("Write result:" + srt); 3. }</pre>

2.5.2.3 Escribir contraseña

Namespace	RFIDReaderAPI.RFIDReader._Tag6C
Function1	<pre>static Int32 WriteAccessPassWord(String ConnID, eAntennaNo antNum, String sWriteData, eMatchCode matchType = eMatchCode.None, string matchCode = "", int matchWordStartIndex = -1, string accessPassword = "") // sWriteData: password content (8 Hexadecimal string data)</pre> <p>Optional parameters:</p> <pre>// matchType: matching area EPC TID // matchCode: tag data need to be matched // matchWordStartIndex: matching Data starting index // accessPassword: Tag access password // dataStartIndex: starting index to be written</pre> <p>Note: matchType, matchCode and matchWordStartIndex need to be used together.</p>
Parameter	Please refer to FunctionRemark.
Return	True: successful; others: failed. refers to Appendix A
Remark	
Example code	<pre>Program log = new Program(); if (RFIDReader.CreateSerialConn(SerialConnId, log)) { string srt = RFIDReader._Tag6C.WriteAccessPassWord(SerialConnId, eAntennaNo._1, "88888888", matchType: eMatchCode.TID, matchCode: tid, matchWordStartIndex: 0, accessPassword: "11111111"); Console.WriteLine("Write result:" + srt); }</pre>

2.5.3 Bloqueo de etiqueta

Namespace	RFIDReaderAPI.RFIDReader._Tag6C
Function1	static Int32 Lock(String ConnID, eAntennaNo antNum, eLockArea lockArea, eLockType lockType) // ConnID: connection identifier // antNum: antenna number // lockArea: lock area enumeration // lockType: lock type enumeration
Function2	static Int32 Lock_MatchEPC(String ConnID, eAntennaNo antNum, eLockArea lockArea, eLockType lockType, String sMatchData, Int32 matchWordStartIndex) // sMatchData: EPC data to be matched (Hexadecimal string) // matchWordStartIndex: match Data starting address, unit is word
Function3	static Int32 Lock_MatchEPC(String ConnID, eAntennaNo antNum, eLockArea lockArea, eLockType lockType, String sMatchData, Int32 matchWordStartIndex, String accessPassword) // accessPassword: Tag access password
Function4	static Int32 Lock_MatchTID(String ConnID, eAntennaNo antNum, eLockArea lockArea, eLockType lockType, String sMatchData, Int32 matchWordStartIndex) // sMatchData: TID data to be matched(Hexadecimal string) // matchWordStartIndex: match Data starting address, unit is word
Function5	static Int32 Lock_MatchTID(String ConnID, eAntennaNo antNum, eLockArea lockArea, eLockType lockType, String sMatchData, Int32 matchWordStartIndex, String accessPassword) // accessPassword: Tag access password
Parameter	// refer to above method Remark
Return	True: successful; false: failed refers to Appendix A
Remark	
Example code	<pre>Program log = new Program(); if (RFIDReader.CreateSerialConn(SerialConnId, log)) { int rt = RFIDReader._Tag6C.Lock_MatchEPC(SerialConnId, eAntennaNo._12 eAntennaNo._4, eLockArea.epc, eLockType.Unlock, "4321", 0, "00000001"); Console.WriteLine("Unlock result:" + rt); rt = RFIDReader._Tag6C.Lock_MatchEPC(SerialConnId, eAntennaNo._4, eLockArea.epc, eLockType.Lock, "4321", 0, "00000001"); Console.WriteLine("Lock result:" + rt); }</pre>

2.5.4 Destruir etiqueta

Namespace	RFIDReaderAPI.RFIDReader._Tag6C
Function1	static Int32 Destroy(String ConnID, eAntennaNo antNum, String destroyPassword) // ConnID: connection identifier // antNum: antenna number // destroyPassword: kill password (Hexadecimal string)
Function2	static Int32 Destroy_MatchEPC(String ConnID, eAntennaNo antNum, String destroyPassword, String sMatchData, Int32 matchWordStartIndex) // sMatchData: EPC data to be matched(Hexadecimal string) // matchWordStartIndex: match Data starting address, unit is word
Function3	static Int32 Destroy_MatchTID(String ConnID, eAntennaNo antNum, String

	destroyPassword, String sMatchData, Int32 matchWordStartIndex) // sMatchData: TID data to be matched (Hexadecimal string)
Parameter	// refer to above method Remark
Return	True: successful; false: failed refers to Appendix A
Remark	
Example code	<pre> Program log = new Program(); if (RFIDReader.CreateSerialConn(SerialConnId, log)) { int rt = RFIDReader._Tag6C.Destroy_MatchEPC(SerialConnId, eAntennaNo._4 eAntennaNo._23, "00000001", "4321", 0); Console.WriteLine("Excute result:" + rt); Thread.Sleep(300); } </pre>

2.5.5 Obtener parametros QT

Namespace	RFIDReaderAPI.RFIDReader._Tag6C
Function1	static String GetQtTagOption (String ConnID, eAntennaNo antNum) // ConnID: connection identifier // antNum: antenna number
Function2	static String GetQtTagOption (String ConnID, eAntennaNo antNum, String accessPassword) // accessPassword: Access Password (Hexadecimal string)
Function3	static String GetQtTagOption_MatchEPC (String ConnID, eAntennaNo antNum, String sMatchData, Int32 matchWordStartIndex, String accessPassword) // sMatchData: matched TID data(Hexadecimal string) // matchWordStartIndex: match Data starting address, unit is word
Function4	static String GetQtTagOption_MatchTID (String ConnID, eAntennaNo antNum, String sMatchData, Int32 matchWordStartIndex, String accessPassword) // sMatchData: matched TID data(Hexadecimal string) // matchWordStartIndex: match Data starting address, unit is word
Parameter	// refers to above method
Return	successfully: qt1 + " " + qt2 failed: ""
Remark	qt1 value: 1, when OPEN and SECURED state, lower response distance; 0, when OPEN and SECURED state, not lower response distance qt2 value: 1, tag into open mode; 0, tag into private mode
Example code	<pre> string tcp = "192.168.1.116:9090" RFIDReaderAPI.Interface.IAsynchronousMessage log = new Program(); if (RFIDReaderAPI.RFIDReader.CreateTcpConn(tcp, log)) { var rt = RFIDReader._Tag6C.GetQtTagOption_MatchEPC (tcp,eAntennaNo._2,"EPCCode",0,"000000"); Console.WriteLine(rt); } </pre>

2.5.6 Establecer parametros QT

Namespace	RFIDReaderAPI.RFIDReader._Tag6C
Function1	static String SetQtTagOption (String ConnID, eAntennaNo antNum, bool IsNotReduceResponseDistance, bool IsPrivateMode) // ConnID: connection identifier // antNum: antenna number // IsNotReduceResponseDistance: in open and secured state, if lower response distance or not // IsPrivateMode: tag into private mode or not
Function2	static String SetQtTagOption (String ConnID, eAntennaNo antNum, bool IsNotReduceResponseDistance, bool IsPrivateMode, String accessPassword) // accessPassword: Access Password (Hexadecimal string)
Function3	static String SetQtTagOption_MatchEPC (String ConnID, eAntennaNo antNum, String sMatchData, Int32 matchWordStartIndex, bool IsNotReduceResponseDistance, bool IsPrivateMode, String accessPassword) // sMatchData: EPC data need to be matched (Hexadecimal string) // matchWordStartIndex: match Data starting address, unit is word
Function4	static String SetQtTagOption_MatchTID (String ConnID, eAntennaNo antNum, String sMatchData, Int32 matchWordStartIndex, bool IsNotReduceResponseDistance, bool IsPrivateMode, String accessPassword) // sMatchData: TID data need to be matched (Hexadecimal string) // matchWordStartIndex: match Data starting address, unit is word
Parameter	// refers to above method
Return	Successful: successful information; Failed: "" or failed information
Example code	<pre> string tcp = "192.168.1.116:9090" RFIDReaderAPI.Interface.IAsynchronousMessage log = new Program(); if (RFIDReaderAPI.RFIDReader.CreateTcpConn(tcp, log)) { string rt = RFIDReader._Tag6C.SetQtTagOption_MatchEPC (tcp,eAntennaNo._2,"EPCCode",0,true,true,"000000"); if (rt.StartsWith("0")) Console.WriteLine("SET OK"); else Console.WriteLine("SET FAILED"); } </pre>

2.5.7 Operación no rastreable G2V2

Specific firmware support is required

Namespace	RFIDReaderAPI.RFIDReader._Tag6C
Function1	static String SetG2V2UntraceableOption(String ConnID, eAntennaNo antNum, G2V2UntraceableModel g2v2) // ConnID: connection identifier // antNum: antenna number // g2v2: G2V2 Untraceable parameters

Function2	static String SetG2V2UntraceableOption(String ConnID, eAntennaNo antNum, G2V2UntraceableModel g2v2, String accessPassword) // accessPassword: Tag access password
Function3	static String SetG2V2UntraceableOption_MatchEPC (String ConnID, eAntennaNo antNum, G2V2UntraceableModel g2v2, String sMatchData, Int32 matchWordStartIndex, String accessPassword) // sMatchData: the EPC data to be matched // matchWordStartIndex: match Data starting index
Function4	static String SetG2V2UntraceableOption_MatchTID (String ConnID, eAntennaNo antNum, G2V2UntraceableModel g2v2, String sMatchData, Int32 matchWordStartIndex, String accessPassword) // sMatchData: the TID data to be matched // matchWordStartIndex: match Data starting index
Parameter	G2V2UntraceableModel : G2V2 Untraceable parameters // int _Untraceable_flag_bit : Untraceable flag bit 0/1 // int _EPC : EPC show/hide flag bit. 0,show; 1, a Tag untraceably hides EPC memory above that set by its EPC length field // int _EPC_length : new EPC length. // int _TID : TID hide parameter. 0, show; 1, the Tag untraceably hides TID memory above 20h; 2, the Tag untraceably hides all TID memory. // int _User : USER hide parameter. 0,show; 1, hide // int _Range : Tag response range. 0,normal; 1, toggle temporarily; 2, reduced // UntraceableParam() : Converts the decimal parameters to a hexadecimal String, returning a String
Return	0 success 1 antenna port parameter error 2 select read area error 3 Untraceable parameters error 4 CRC checksum error 5 power is not enough 6 access password error 7 not supported command 8 other error 9 tag missed 10 send command failed
Remark	
Example code	<pre> Program log = new Program(); if (RFIDReader.CreateSerialConn(SerialConnId, log)) { G2V2UntraceableModel G2V2 = new G2V2UntraceableModel(0, // Untraceable_flag_bit 0, //EPC show/hide flag bit. 0,show; 1, hide 1, //new EPC length 0, //TID hide parameter. 0, show; 1, the Tag untraceably hides TID memory above 20h; 2, the Tag untraceably hides all TID memory.); } </pre>

```

1, // USER hide parameter. 0,show; 1, hide
1 //Tag response range. 0,normal; 1, toggle temporarily; 2, reduced
);
var res = RFIDReader._Tag6C.SetG2V2UntraceableOption(SerialConnId, eAntennaNo._1,
G2V2);
Console.WriteLine("G2V2 setting result:" + res);
RFIDReader.CloseConn(SerialConnId);
}

```

2.6 Operación de etiqueta 6B (omitido)

Si necesita usar una etiqueta RFID ISO18000-6B para sus proyectos, pídanos que le ofrezcamos soporte de desarrollo 6B

2.7 Interfaz de devolución de llamada IAsynchronousMessage

```

// asynchronous callback Message interface
public interface IAsynchronousMessage
{
    void WriteDebugMsg(String msg);
    void WriteLog(String msg);
    void PortConneting(String connID);
    void PortClosing(String connID);
    void OutPutTags(Models.Tag_Model tag);
    void OutPutTagsOver();
    void GPIControlMsg(GPI_Model gpi_model);
}

```

Call back method	Remark
WriteDebugMsg	output debug message
WriteLog	output log message
PortConnecting	Reader at TCP server mode, client-side connection callback When the connection ID is obtained from the callback, the device can be read and written through the connection ID.
PortClosing	When the device is disconnected, the API calls back the connection ID, indicating that the device with the current connection ID is disconnected.
OutPutTags	The output tag information callback, whether it is single read, inventory (circular) read, or getting the tag data in the cache, is the same callback interface. Note: all the tag data is asynchronous callback in API, do not deal with complex logic in the callback to make sure the inside of the API cache cleaning, when complex processing is required, put it into a thread.
OutPutTagsOver	After the last tag is uploaded, a sync end signal is uploaded indicating the end of the current read tag action.
GPIControlMsg	When the GPI trigger parameter is turned on and there is a GPI trigger event, the function will call back the GPI port number where the current event is located, as well as the level status information.

2.8 Datos de devolución de llamada Tag_Model Field Introducciones

Field	Remark
ReaderName	Reader connection identifier, means which reader are reading data, e.g.: "192.168.1.116:9090"
TagType	Tag type, "6c", "6b", "gb" 3 types.
EPC	Tag EPC data, Hexadecimal string.
PC	Tag PC value
ANT_NUM	uploaded antenna number
RSSI	RSSI value
TID	Tag TID, Hexadecimal string.
UserData	Tag user area data, Hexadecimal string.
TagetData	Tag password area data, include access password and kill password, Hexadecimal string.
Frequency	Tag carrier frequency
Phase	Tag phase
ReadTime	Tag reading time
G2V2Challenge	G2V2 Challenge data
G2V2Data	G2V2data
EPCData	Tag EPCdata
Bag	The sub antenna number corresponding to the hub
RSSI_dB	RSSIvalue unit is dBm
CatchCount	Count in cache
JoharTemp	Temperature value of Johar Technology CTESIUS series LTU32 temperature sensor chip
ReaderSN	Reader SN, this field will only exist after calling the GetSN interface

2.9 Datos de devolución de llamada GPI_Model Campo Introducciones

Filed	Remark
ReaderName	Reader connection identifier, means which reader are reading data, e.g.: "192.168.1.116:9090"
GpiIndex	GPI port index, starting at 1, 1 represents GPI1, and so on.
GpiState	0 means low level, 1 means high level
StartOrStop	0 means trigger start, 1 means trigger end
UTC	Sensor trigger UTC time, byte[] type, length is 8, The first 4 bytes is UTC seconds and the last 4 bytes is microseconds
Utc_Time	Sensor trigger UTC time, string type, format is: "yyyy.MM.dd HH:mm:ss.fff"

2.10 Transferencia continua de punto de interrupción

2.10.1 Configuración

Namespace	RFIDReaderAPI.RFIDReader._ReaderConfig
Function	static Int32 SetBreakPointUpload(String ConnID, bool Switch)
Parameter	// ConnID: connection identifier // Switch: false:close, true:open e.g.: SetBreakPointUpload ("192.168.1.116:9090",false); this method is for close the breakpoint function (cache function)
Return	0: successful; others: failed
Remark	Start up this function, and the ReadTime field in the Tag Model will be effective
Example code	<pre>string tcp = "192.168.1.116:9090" RFIDReaderAPI.Interface.IAsynchronousMessage log = new Program(); if (RFIDReaderAPI.RFIDReader.CreateTcpConn(tcp, log)) { int rt = RFIDReader._ReaderConfig.SetBreakPointUpload(tcp,true); if (rt == 0) Console.WriteLine("SET OK"); else Console.WriteLine("SET FAILED"); }</pre>

2.10.2 Obtener

Namespace	RFIDReaderAPI.RFIDReader._ReaderConfig
Function	static String GetBreakPointUpload(String ConnID)
Parameter	// ConnID: connection identifier e.g.: GetBreakPointUpload ("192.168.1.116:9090");
Return	Open or Close
Remark	None
Example code	<pre>string tcp = "192.168.1.116:9090" RFIDReaderAPI.Interface.IAsynchronousMessage log = new Program(); if (RFIDReaderAPI.RFIDReader.CreateTcpConn(tcp, log)) { var rt = RFIDReader._ReaderConfig.GetBreakPointUpload(tcp); Console.WriteLine(rt); }</pre>

2.10.3 Recuperar datos de caché de punto de interrupción

Namespace	RFIDReaderAPI.RFIDReader._ReaderConfig
Function	static String GetBreakPointCacheTag(String ConnID)

Parameter	// ConnID: connection identifier
Return	Success: have cache, Null: no cache, Receive Over: data returned completely
Remark	When the PC and the device link layer is interrupted, the data read will be stored in the cache of the reader, (cache support max 5000 times tag reading record, if over this reading times, will use FIFO mode to iterate cache), when this method is called, reader will upload cache data when breakpoint, and the ReadTime field in the Tag Model will be effective.
Example code	<pre>string tcp = "192.168.1.116:9090" RFIDReaderAPI.Interface.IAsynchronousMessage log = new Program(); if (RFIDReaderAPI.RFIDReader.CreateTcpConn(tcp, log)) { var rt = RFIDReader._ReaderConfig.GetBreakPointCacheTag(tcp);</pre>

2.10.4 Borrar datos de caché de punto de interrupción

Namespace	RFIDReaderAPI.RFIDReader._ReaderConfig
Function	static Int32 ClearBreakPointCache(String ConnID)
Parameter	// ConnID: connection identifier
Return	0: successful; others: failed
Remark	When the PC and the device link layer is interrupted, the data read will be stored in the cache of the reader, When this method is called, the cache when the reader is interrupted will be cleared.
Example code	<pre>string tcp = "192.168.1.116:9090" RFIDReaderAPI.Interface.IAsynchronousMessage log = new Program(); if (RFIDReaderAPI.RFIDReader.CreateTcpConn(tcp, log)) { int rt = RFIDReader._ReaderConfig.ClearBreakPointCache(tcp); if (rt == 0) Console.WriteLine("Clear OK"); else Console.WriteLine("Clear failed"); }</pre>

2.11 Operación WiFi

2.11.1 Obtener el estado del interruptor WiFi

Namespace	RFIDReaderAPI.RFIDReader._ReaderConfig
Function	static Int32 GetWiFiSwitchState(String ConnID)
Parameter	// ConnID: connection identifier
Return	0: open; 1: close
Remark	

Example code	<pre>string tcp = "192.168.1.116:9090"; RFIDReaderAPI.Interface.IAsynchronousMessage log = new Program(); if (RFIDReaderAPI.RFIDReader.CreateTcpConn(tcp, log)) { int rt = RFIDReader._ReaderConfig.GetWiFiSwitchState(tcp); if (rt == 0) Console.WriteLine("OK"); else Console.WriteLine("Failed"); }</pre>
--------------	--

2.11.2 Establecer el estado del interruptor Wi-Fi

Namespace	RFIDReaderAPI.RFIDReader._ReaderConfig
Function	static Int32 SetWiFiSwitchState(String ConnID, bool isOpen)
Parameter	// ConnID: connection identifier // isOpen: Set switch state. True: open; false: close
Return	0: successful; 1: failed
Remark	
Example code	<pre>string tcp = "192.168.1.116:9090" RFIDReaderAPI.Interface.IAsynchronousMessage log = new Program(); if (RFIDReaderAPI.RFIDReader.CreateTcpConn(tcp, log)) { int rt = RFIDReader._ReaderConfig.SetWiFiSwitch(tcp,true); if (rt == 0) Console.WriteLine("SET OK"); else Console.WriteLine("SET FAILED"); }</pre>

2.11.3 Obtener IP del adaptador Wi-Fi

Namespace	RFIDReaderAPI.RFIDReader._ReaderConfig
Function	static String GetReaderWifiIP(String ConnID)
Parameter	// ConnID: connection identifier
Return	IP Subnet mask Gateway
Remark	
Example code	<pre>string tcp = "192.168.1.116:9090" RFIDReaderAPI.Interface.IAsynchronousMessage log = new Program(); if (RFIDReaderAPI.RFIDReader.CreateTcpConn(tcp, log)) { var rt = RFIDReader._ReaderConfig.GetReaderWifiIP(tcp); Console.WriteLine(rt); }</pre>

2.11.4 Establecer IP del adaptador Wi-Fi

Namespace	RFIDReaderAPI.RFIDReader._ReaderConfig
Function	static Int32 SetReaderWifiIP(String ConnID,String ip,String mask,String gateway)
Parameter	// ConnID: connection identifier // ip: IP address //mask: Subnet mask //gateway: network gateway
Return	0: successful; 1: failed
Remark	
Example code	<pre>string tcp = "192.168.1.116:9090" RFIDReaderAPI.Interface.IAsynchronousMessage log = new Program(); if (RFIDReaderAPI.RFIDReader.CreateTcpConn(tcp, log)) { int rt = RFIDReader._ReaderConfig.SetReaderWifiIP(tcp,"192.168.1.114","255.255.255.0","192.1 68.1.1"); if (rt == 0) Console.WriteLine("SET OK"); else Console.WriteLine("SET FAILED"); }</pre>

2.11.5 Buscar punto de acceso Wi-Fi

Namespace	RFIDReaderAPI.RFIDReader._ReaderConfig
Function	static Int32 SearchWIFI(String ConnID)
Parameter	// ConnID: connection identifier
Return	0: successful; 1: failed
Remark	
Example code	<pre>string tcp = "192.168.1.116:9090" RFIDReaderAPI.Interface.IAsynchronousMessage log = new Program(); if (RFIDReaderAPI.RFIDReader.CreateTcpConn(tcp, log)) { var rt = RFIDReader._ReaderConfig.SearchWIFI(tcp); Console.WriteLine(rt); }</pre>

2.11.6 Guardar resultado de búsqueda de Wi-Fi

Namespace	RFIDReaderAPI.RFIDReader._ReaderConfig
Function	static Boolean RequestWiFiDataToTxt(String ConnID,String filepath)
Parameter	// ConnID: connection identifier

	//filepath: saved txt file path
Return	Ture: successful; false: failed
Remark	
Example code	<pre>string tcp = "192.168.1.116:9090" RFIDReaderAPI.Interface.IAsynchronousMessage log = new Program(); if (RFIDReaderAPI.RFIDReader.CreateTcpConn(tcp, log)) { var rt = RFIDReader._ReaderConfig.RequestWiFiDataToTxt(tcp,"D:\\Project\\a.txt"); Console.WriteLine(rt); }</pre>

2.11.7 Conectar punto de acceso Wi-Fi

Namespace	RFIDReaderAPI.RFIDReader._ReaderConfig
Function	static Int32 ConnectWIFI(String ConnID,string name, string pwd, int authType, int encryption)
Parameter	// ConnID: connection identifier // name: wifi name //pwd: wifi password //authType: Authentication type //encryption: Encryption Algorithm
Return	True: successful; false: failed
Remark	e.g. : 1、 when Wi-Fi hotspot need password : <pre>if (WifiAuth=="WPA") { authType = 1; } else if (WifiAuth == "WPA2") { authType = 2; } int isConnect = CLReader._ReaderConfig.ConnectWIFI(ConnID, WifiName, pwd, authType, 2);</pre> 2、 when Wi-Fi hotspot without password : <pre>int ret = CLReader._ReaderConfig.ConnectWIFI(ConnID, WifiName, "", 0, 2);</pre>
Example code	<pre>string tcp = "192.168.1.116:9090" RFIDReaderAPI.Interface.IAsynchronousMessage log = new Program(); if (RFIDReaderAPI.RFIDReader.CreateTcpConn(tcp, log)) { int rt = RFIDReader._ReaderConfig.ConnectWIFI(tcp, "iPhone", "12345678", 1,2); if (rt == 0) Console.WriteLine("Connect successfully"); else Console.WriteLine("Connect failed"); }</pre>

```
    }
```

2.11.8 Obtener el nombre de Wi-Fi conectado actual

Namespace	RFIDReaderAPI.RFIDReader._ReaderConfig
Function	static String GetWiFiConnectInfo(String ConnID)
Parameter	// ConnID: connection identifier
Return	Present connected Wi-Fi name
Remark	

2.12 Función de lista blanca

El proceso para integrar la función de lista blanca.

A. Todos los datos de la lista blanca almacenados en el archivo userdata.db, podemos ver o editar el registro del archivo de base de datos - userdata.db a través del navegador Sllite DataBase, puede descargar DB Browser para SQLite 3.10 desde <http://sqlitebrowser.org/>, y luego podemos obtener la información de la lista blanca almacenada en el lector indirectamente al ver el archivo de la base de datos que se ha sincronizado con el lector.

Desarrolle la función similar a la del programa SQLite 3.10 para su propia aplicación

B. Usando la función de lista blanca API para cargar el archivo de base de datos de la lista blanca en el lector.

2.12.1 Establecer parámetros de lista blanca

Namespace	RFIDReaderAPI.RFIDReader._ReaderConfig
Function	static Int32 SetWhitelistLabelAction (String ConnID, string param)
Parameter	// ConnID: connection identifier // param: relay no.(1-4) closing time(unit is 100ms, 4 hex numbers) function switch(0-turn off /1-turn on whitelist function/2-Open Buzzer) data type (0 TIID/1 EPC)
Return	0: successful; others: failed
Remark	None
Example code	<pre>string tcp = "192.168.1.116:9090" RFIDReaderAPI.Interface.IAsynchronousMessage log = new Program(); if (RFIDReaderAPI.RFIDReader.CreateTcpConn(tcp, log)) { string rt = RFIDReader._ReaderConfig.SetWhitelistLabelAction(tcp,"1 0001 0 1"); if (rt.StartsWith("0")) Console.WriteLine("SET OK"); else Console.WriteLine("SET FAILED"); }</pre>

2.12.2 Obtener parámetros de la lista blanca

Namespace	RFIDReaderAPI.RFIDReader._ReaderConfig
Function	static Int32 GetWhitelistLabelAction (String ConnID)
Parameter	// ConnID: connection identifier
Return	relay no.(1-4) closing time(unit is 100ms) function switch(0 -turn off /1- turn on) data type (0 TIID/1 EPC)
Remark	None
Example code	<pre>string tcp = "192.168.1.116:9090" RFIDReaderAPI.Interface.IAsynchronousMessage log = new Program(); if (RFIDReaderAPI.RFIDReader.CreateTcpConn(tcp, log)) { var rt = RFIDReader._ReaderConfig.GetWhitelistLabelAction(tcp); Console.WriteLine(rt); }</pre>

2.12.3 Cargar archivo de base de datos de lista blanca al lector

Namespace	RFIDReaderAPI.RFIDReader._ReaderConfig
Function	static Int32 LoadWhiteList (String ConnID, uint dataIndex, byte[] param)
Parameter	// ConnID: connection identifier // dataIndex: upgrade data serial number 0x00000000 start, 0xFFFFFFFF end // param : whitelist data
Return	0: successful; others: failed
Remark	
Example code	<pre>string datasource = Application.StartupPath + "\\userdata.db"; FileStream fs = null; try { fs = new FileStream(datasource, FileMode.Open); // byte[] fileBuffer = new byte[fs.Length]; // fs.Read(fileBuffer, 0, fileBuffer.Length); if (!String.IsNullOrEmpty(datasource)) { if (fs.Length >= 1024 * 1024 * 100) { throw new Exception("Max File 100M! "); } Int32 fileSize = (Int32)fs.Length; byte[] buffer = new byte[256]; UInt32 blockCount = (UInt32)((fileSize % 256) == 0 ? fileSize / 256 : fileSize / 256 + 1); Int32 maxProcess = (Int32)blockCount; //SetMaxProcess(); Int32 copyIndex = 0; String isOK = ""; } }</pre>

```

isOK = Program.PARAM_SET.LoadWhiteList(ConnID, 0, new byte[0]);
if (isOK.EndsWith("0"))
{
    for (UInt32 i = 0; i < blockCount; i++)
    {
        Int32 readCount = 0;
        if (copyIndex + 256 <= fileSize)
        {
            readCount = fs.Read(buffer, 0, 256);
        }
        else
        {
            byte[] lastBuffer = new byte[fileSize - copyIndex];
            readCount = fs.Read(lastBuffer, 0, fileSize - copyIndex);
            buffer = lastBuffer;
        }
        isOK = RFIDReaderAPI.RFIDReader._ReaderConfig.LoadWhiteList(ConnID,
i, buffer);

        if (String.IsNullOrEmpty(isOK)) { throw new Exception("Time Out! "); }
        else if (isOK.EndsWith("1")) { throw new Exception("return false! "); }
        copyIndex += 256;
        //ProcessPerformStep();
    }
}
else
{
    throw new Exception("upgrade error! ");
}
if (Program.PARAM_SET.LoadWhiteList(ConnID, UInt32.MaxValue, new
byte[0]).EndsWith("0"))
{
    if (DialogResult.OK == ShowQuestion(_RC.GetString("WhiteListMsg10")))
    {
        Program.PARAM_SET.ReSetReader(ConnID);
    }
}
else
{
    ShowMessage("CRC ERROR! ");
}
isWorking = false;
}
else
{

```

```

        isWorking = false;
        ShowMessage(_RC.GetString("WhiteListMsg11"));
    }
}
catch (Exception ex)
{
    ShowMessage(ex.Message);
    isWorking = false;
}
finally
{
    if (fs != null)
    {
        fs.Close();
    }
}
}

```

2.13 Número de antena Descripción de parámetros

- Con respecto a la operación de lectura, escritura, bloqueo y eliminación de etiquetas del parámetro del número de antena: **antNum**. La función es especificar si funciona una antena o múltiples antenas para un lector.
- Al especificar múltiples antenas para trabajar con antNum por su valor total, por ejemplo:
 - Especifique antena 1+ antena 2 para trabajar: **antNum = eAntennaNo._1 | eAntennaNo._2**
 - Especifique antena1+antena2+antena 3 para trabajar: **antNum = eAntennaNo._1 | eAntennaNo._2 | eAntennaNo._3**
 - Especifique antena 1+ antena 2+ antena 3+ antena 4 para trabajar: **antNum = eAntennaNo._1 | eAntennaNo._2 | eAntennaNo._3 | eAntennaNo._4**
 - Especifique antena 1+ antena 24 para trabajar: **antNum = eAntennaNo._1 | eAntennaNo._24**

2.14 Instrucciones de campo de la interfaz de devolución de llamada ISearchDevice

Field	Instruction
DeviceInfo(Models.Device_Model model)	Device information callback
DebugMsg(string msg)	Debug information callback

2.15 Datos de devolución de llamada Dispositivo_Modelo Instrucciones archivadas

Field	Instruction
MAC	Reader MAC address
IP	Reader IP address
ServerPort	Server port
RemoteIP	Host IP that the reader actively connects to
RemotePort	Host IP port
WorkingMode	TCP working mode of the reader
ConnectMode	Reader connection status
DeviceType	Reader type
DHCP	DHCP
Mask	Reader mask
Gateway	Reader gateway address

3. Ejemplo de programación

C# Code: read 6C tag example

```
class Program : RFIDReaderAPI.Interface.IAsynchronousMessage
{
    static void Main(string[] args)
    {
        // RFIDReaderAPI.RFIDReader.CreateSerialConn("COM1:115200",new
        Program()); // use serial port to connect RFID reader
        if (RFIDReaderAPI.RFIDReader.CreateTcpConn("192.168.1.116:9090", new
        Program())) // use TCP to connect RFID reader
        {
            RFIDReaderAPI.RFIDReader._Tag6C.GetEPC("192.168.1.116:9090",eAntennaNo._1|eA
            ntennaNo._2| eAntennaNo._3|eAntennaNo._4, eReadType.Inventory);
            // send reading EPC instruction to the reader using Ant1+ Ant2+Ant3+Ant4
            at the same time
        }
        else
        {
        }
        Console.ReadKey();

        RFIDReaderAPI.RFIDReader._RFIDConfig.Stop("192.168.1.116:9090");//send stop
        instruction
        RFIDReaderAPI.RFIDReader.CloseConn("192.168.1.116:9090"); // close
        connection
    }
    #region interface implement
    // Tag Callback
    public void OutPutTags(RFIDReaderAPI.Models.Tag_Model tag)
    {
        Console.WriteLine("EPC:" + tag.EPC + " - TID:" + tag.TID);
    }
    public void WriteDebugMsg(string msg)
    {
    }
}
```

```

    }
    public void WriteLog(string msg)
    {

    }
    public void PortConneting(string connID)
    {

    }
    public void PortClosing(string connID)
    {

    }
    public void OutPutTagsOver()
    {

    }
    public void GPIControlMsg(GpiModel gpiModel)
    {

    }
    }
    #endregion
}

```

4. Preguntas frecuentes y soluciones

Pregunta	Solucion
El dispositivo no podía funcionar normalmente	<ol style="list-style-type: none"> 1. Verifique que la luz de encendido sea normal o no. 2. Si es normal, debe haber algún sonido de aviso cuando se enciende.
el puerto serie no podía funcionar normalmente	<ol style="list-style-type: none"> 1. Compruebe que el cable de conexión esta conectado normal o no . 2. Si es condicional, use otro dispositivo para verificar que este cable sea normal o no. 3. Intenta usar RJ45 para comunicarte. 4. Tasa de baudios predeterminada: 115200.
RJ45 no podía funcionar normalmente	<ol style="list-style-type: none"> 1. Verifique que el LED funcione normal o no. 2. Use la instrucción Ping para verificar que el cable funcione normalmente o no 3. Pruebe la conexión del puerto serie, consulte la IP correcta por Demo 4. IP y puerto predeterminados: "192.168.1.116: 9090"

5. Appendix A: 6C Operación de etiqueta

Código de error devuelto

Read tag error codes:

Code	Remark
0	Configuration successful
1	Antenna port Parameter error
2	Read Parameter error
3	TID parameter error
4	user data area parameter error
5	reserved area parameter error
6	Other parameter error

Write tag error codes:

Code	Remark
0	Write successfully
1	Antenna port parameter error
2	Choose parameter error
3	Write parameter error
4	CRC correct error
5	Power not enough
6	Data area overflow
7	Data area locked
8	Access password error
9	Other tag error
10	Tag lost
11	Instruction sent error

Lock tag error codes:

Code	Remark
0	Lock successfully
1	Antenna com port parameter error
2	Choose parameter error
3	Write parameter error
4	CRC correcting error
5	Power no enough
6	data area overflow
7	data area is locked
8	Access password error
9	Other tag error
10	Tag lost
11	instruction sent error

Kill tag error codes:

Code	Remark
0	Kill successfully
1	Antenna port parameter error
2	Choose parameter error
3	CRC correct error
4	Power not enough
5	Password error
6	Other tag error
7	Tag lost
8	Instruction sent error